

Recombinant E2F1 Monoclonal Antibody

catalog number: **E-AB-81553**

Note: Centrifuge before opening to ensure complete recovery of vial contents.

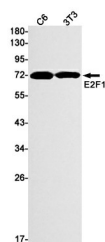
Description

Reactivity	Human;Mouse;Rat
Immunogen	A synthetic peptide of human E2F1
Host	Rabbit
Isotype	IgG
Clone	R03-5G3
Purification	Affinity Purified
Buffer	50mM Tris-Glycine(pH 7.4), 0.15M NaCl, 40% Glycerol, 0.05% stabilizer and 0.05% protective protein.

Applications

Applications	Recommended Dilution
WB	1:500-1:1000
IHC	1:20-1:100
IF	1:50-1:100

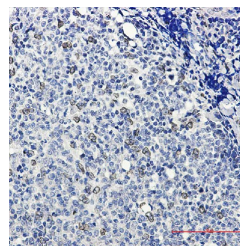
Data



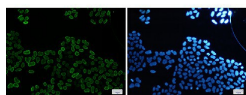
Western blot detection of E2F1 in C6,3T3 cell lysates using E2F1 Rabbit mAb(1:1000 diluted). Predicted band size: 47kDa. Observed band size: 70kDa.

Observed-MW:70 kDa

Calculated-MW:47 kDa



Immunohistochemistry of E2F1 in paraffin-embedded Human tonsil using E2F1 Rabbit mAb at dilution 1:20



Immunofluorescence of E2F1(green) in HeLa cells using E2F1 Rabbit mAb at dilution 1:50, and DAPI(blue)

Preparation & Storage

Storage	Store at -20°C Valid for 12 months. Avoid freeze / thaw cycles.
Shipping	The product is shipped with ice pack, upon receipt, store it immediately at the temperature recommended.

Background

For Research Use Only

The protein encoded by this gene is a member of the E2F family of transcription factors. The E2F family plays a crucial role in the control of cell cycle and action of tumor suppressor proteins and is also a target of the transforming proteins of small DNA tumor viruses. The E2F proteins contain several evolutionally conserved domains found in most members of the family. These domains include a DNA binding domain, a dimerization domain which determines interaction with the differentiation regulated transcription factor proteins (DP), a transactivation domain enriched in acidic amino acids, and a tumor suppressor protein association domain which is embedded within the transactivation domain.

For Research Use Only

Toll-free: 1-888-852-8623
Web: www.elabscience.com

Tel: 1-832-243-6086
Email: techsupport@elabscience.com

Fax: 1-832-243-6017

Rev. V1.7