

Recombinant GAPDH Monoclonal Antibody

catalog number: **AN004430L**

Note: Centrifuge before opening to ensure complete recovery of vial contents.

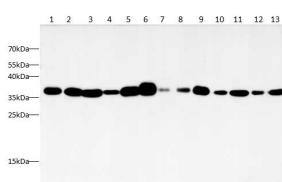
Description

Reactivity	Human;Mouse;Rat
Immunogen	Recombinant protein within Mouse GAPDH
Host	Rabbit
Isotype	IgG
Clone	20B8
Purification	Protein A/G Purification
Buffer	PBS with 0.05% Proclin300, 1% protective protein and 50% glycerol, pH7.4

Applications Recommended Dilution

WB	1:20000-1:100000
IHC	1:2000-1:4000
IF	1:2000-1:4000

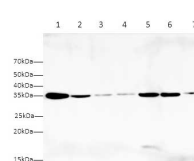
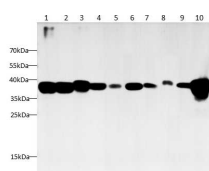
Data



Western Blot with Recombinant GAPDH Monoclonal Antibody at dilution of 1:160000. Lane 1: A431 cell lysate, Lane 2: Caco-2 cell lysate, Lane 3: Jurkat cell lysate, Lane 4: K562 cell lysate, Lane 5: HeLa cell lysate, Lane 6: PC-3 cell lysate, Lane 7: Ramos cell lysate, Lane 8: TF-1 cell lysate, Lane 9: U20-S cell lysate, Lane 10: HL-60 cell lysate, Lane 11: HT-29 cell lysate, Lane 12: Raji cell lysate, Lane 13: HepG2 cell lysate

Observed-MW:36 kDa

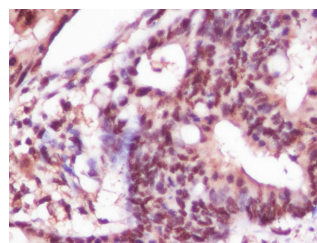
Calculated-MW:36 kDa



Western blot with Recombinant GAPDH Monoclonal Antibody at dilution of 1:160000. lane 1: mouse heart tissue lysate, lane 2: mouse liver tissue lysate, lane 3: mouse uterus tissue lysate, lane 4: mouse lung tissue lysate, lane 5: mouse kidney tissue lysate, lane 6: mouse brain tissue lysate, lane 7: mouse stomach tissue lysate

Observed-MW:36 kDa

Calculated-MW:36 kDa



For Research Use Only

Toll-free: 1-888-852-8623
Web: www.elabscience.com

Tel: 1-832-243-6086
Email: techsupport@elabscience.com

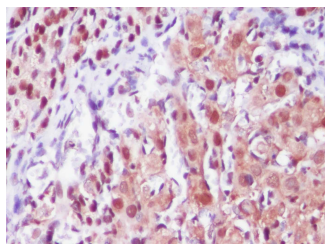
Fax: 1-832-243-6017

Rev. V2.1

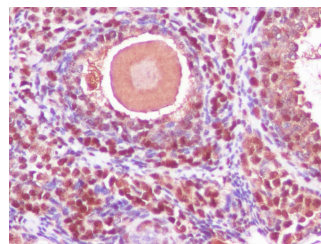
Western Blot with Recombinant GAPDH Monoclonal Antibody at dilution of 1:160000. Lane 1: C6 cell lysate, Lane 2: PC-12 cell lysate, Lane 3: Rat heart tissue lysate, Lane 4: Rat liver tissue lysate, Lane 5: Rat spleen tissue lysate, Lane 6: Rat brain tissue lysate, Lane 7: Rat stomach tissue lysate, Lane 8: Rat testis tissue lysate, Lane 9: Rat thymus tissue lysate, Lane 10: Rat skeletal muscle tissue lysate

Observed-MW:36 kDa

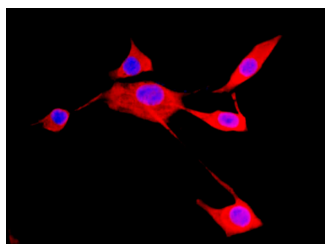
Calculated-MW:36 kDa



Immunohistochemistry of paraffin-embedded human colon cancer using Recombinant GAPDH Monoclonal Antibody at dilution of 1:5000.

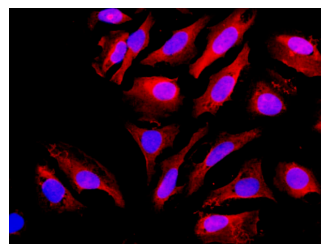


Immunohistochemistry of paraffin-embedded rat ovary using Recombinant GAPDH Monoclonal Antibody at dilution of 1:5000.



Immunofluorescence analysis of U-2 OS cells using Recombinant GAPDH Monoclonal Antibody at dilution of 1:1000

Immunohistochemistry of paraffin-embedded mouse ovary using Recombinant GAPDH Monoclonal Antibody at dilution of 1:5000.



Immunofluorescence analysis of NIH/3T3 cells using Recombinant GAPDH Monoclonal Antibody at dilution of 1:1000

Preparation & Storage

Storage

Store at -20°C Valid for 12 months. Avoid freeze / thaw cycles.

Shipping

The product is shipped with ice pack, upon receipt, store it immediately at the temperature recommended.

Background

GAPDH is an enzyme of 36kDa that catalyzes the sixth step of glycolysis and thus serves to break down glucose for energy and carbon molecules. Because the GAPDH gene is often stably and constitutively expressed at high levels in most tissues and cells, it is commonly used as a loading control for western blot and as a control for qPCR.

For Research Use Only