

Recombinant CD13 Monoclonal Antibody

catalog number: **AN301461L**

Note: Centrifuge before opening to ensure complete recovery of vial contents.

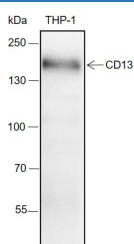
Description

| | |
|---------------------|---|
| Reactivity | Human;Rat;Mouse |
| Immunogen | Recombinant human CD13 fragment |
| Host | Rabbit |
| Isotype | IgG, κ |
| Clone | A156 |
| Purification | Protein A purified |
| Buffer | PBS, 50% glycerol, 0.05% Proclin 300, 0.05% protein protectant. |

Applications Recommended Dilution

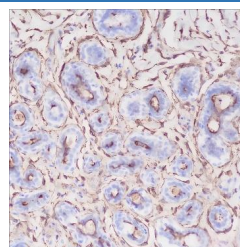
| | |
|------------|--------------|
| WB | 1:500-1:2000 |
| IHC | 1:200-1:1000 |
| IF | 1:50-1:100 |
| FCM | 1:50-1:100 |

Data

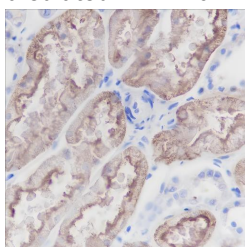


Western Blot with CD13 Monoclonal Antibody at dilution of 1:2000. Lane 1: THP-1

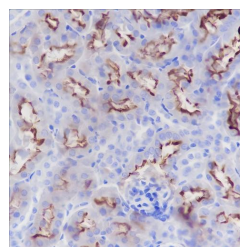
Observed-MW:150 kDa
Calculated-MW:110 kDa



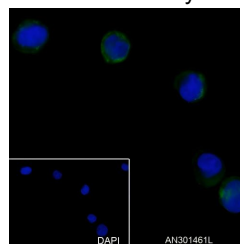
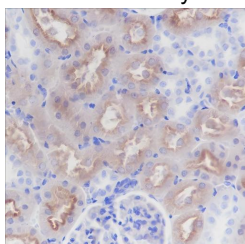
Immunohistochemistry of paraffin-embedded Human breast using CD13 Monoclonal Antibody at dilution of 1:1000.



Immunohistochemistry of paraffin-embedded Human kidney using CD13 Monoclonal Antibody at dilution of 1:1000.



Immunohistochemistry of paraffin-embedded Mouse kidney using CD13 Monoclonal Antibody at dilution of 1:1000.



For Research Use Only

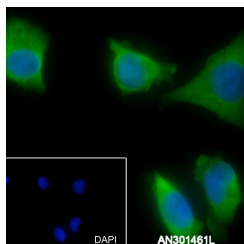
Toll-free: 1-888-852-8623
Web: www.elabscience.com

Tel: 1-832-243-6086
Email: techsupport@elabscience.com

Fax: 1-832-243-6017

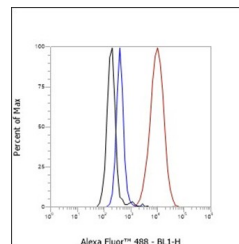
Rev. V1.0

Immunohistochemistry of paraffin-embedded Rat kidney using CD13 Monoclonal Antibody at dilution of 1:1000.



Immunofluorescent analysis of (4% Paraformaldehyde) fixed A375 cells using anti-CD13 Monoclonal Antibody at dilution of 1:50.

Immunofluorescent analysis of (4% Paraformaldehyde) fixed THP-1 cells using anti-CD13 Monoclonal Antibody at dilution of 1:100.



Flow cytometric analysis of human CD13 expression on THP-1 cells. Cells were stained with purified anti-Human CD13, then a Alexa Fluor 488-conjugated second step antibody. The histogram were derived from events with the forward and side light-scatter characteristics of intact cells.

Preparation & Storage

Storage

Store at -20°C Valid for 12 months. Avoid freeze / thaw cycles.

Shipping

Ice bag

Background

Broad specificity aminopeptidase which plays a role in the final digestion of peptides generated from hydrolysis of proteins by gastric and pancreatic proteases. Also involved in the processing of various peptides including peptide hormones, such as angiotensin III and IV, neuropeptides, and chemokines. May also be involved the cleavage of peptides bound to major histocompatibility complex class II molecules of antigen presenting cells. May have a role in angiogenesis and promote cholesterol crystallization. May have a role in amino acid transport by acting as binding partner of amino acid transporter SLC6A19 and regulating its activity.

For Research Use Only

Toll-free: 1-888-852-8623
Web: www.elabscience.com

Tel: 1-832-243-6086
Email: techsupport@elabscience.com

Fax: 1-832-243-6017

Rev. V1.0