

Recombinant Bovine Annexin V protein (His Tag)

Catalog Number: PDEB100007



Note: Centrifuge before opening to ensure complete recovery of vial contents.

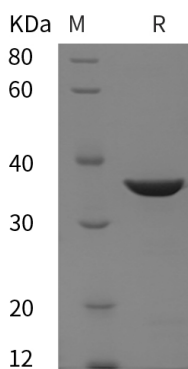
Description

Species	Bovine
Mol_Mass	35.1 kDa
Accession	P81287
Bio-activity	Not validated for activity

Properties

Purity	> 95% as determined by reducing SDS-PAGE.
Endotoxin	< 10 EU/mg of the protein as determined by the LAL method
Storage	Generally, lyophilized proteins are stable for up to 12 months when stored at -20 to -80 °C. Reconstituted protein solution can be stored at 4-8°C for 2-7 days. Aliquots of reconstituted samples are stable at < -20°C for 3 months.
Shipping	This product is provided as lyophilized powder which is shipped with ice packs.
Formulation	Lyophilized from a 0.2 µm filtered solution in PBS with 5% Trehalose and 5% Mannitol.
Reconstitution	It is recommended that sterile water be added to the vial to prepare a stock solution of 0.5 mg/mL. Concentration is measured by UV-Vis.

Data



> 95 % as determined by reducing SDS-PAGE.

Background

Peptidyl-prolyl cis-trans isomerase A, also known as PPIase A, Rotamase A, Cyclophilin A, Cyclosporin A-binding protein, PPIA and CYPA, is a cytoplasm protein which belongs to the cyclophilin-type PPIase family and PPIase A subfamily. Cyclophilins (CyPs) are a family of proteins found in organisms ranging from prokaryotes to humans. These molecules exhibit peptidyl-prolyl isomerase activity, suggesting that they influence the conformation of proteins in cells. PPIA / Cyclophilin A accelerate the folding of proteins. It catalyzes the cis-trans isomerization of proline imidic peptide bonds in oligopeptides. PPIA / Cyclophilin A is secreted by vascular smooth muscle cells in response to inflammatory stimuli, and could thus contribute to atherosclerosis. It is not essential for mammalian cell viability. PPIA / Cyclophilin A can interact with several HIV proteins, including p55 gag, Vpr, and capsid protein, and has been shown to be necessary for the formation of infectious HIV virions.

For Research Use Only

A Reliable Research Partner in Life Science and Medicine
Tel:400-999-2100

Email:techsupport@elabscience.cn

Web:www.elabscience.cn

Rev. V1.2