

# Recombinant Human SerpinB6/PI-6 Protein (His Tag)



Catalog Number:PKSH030778

**Note:** Centrifuge before opening to ensure complete recovery of vial contents.

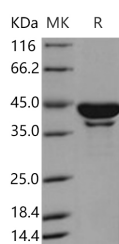
## Description

<b>Synonyms</b>	Serpin B6;Cytoplasmic Antiproteinase;CAP;Peptidase Inhibitor 6;PI-6;Placental Thrombin Inhibitor;SERPINB6;PI6;PTI;PI-6;PTI;RP1-90J20.6;SPI3
<b>Species</b>	Human
<b>Expression Host</b>	Baculovirus-Insect Cells
<b>Sequence</b>	Asp 2-Pro 376
<b>Accession</b>	AAB30320.1
<b>Calculated Molecular Weight</b>	44.9 kDa
<b>Observed molecular weight</b>	43 kDa
<b>Tag</b>	N-His

## Properties

<b>Purity</b>	> 90 % as determined by reducing SDS-PAGE.
<b>Endotoxin</b>	< 1.0 EU per µg of the protein as determined by the LAL method.
<b>Storage</b>	Generally, lyophilized proteins are stable for up to 12 months when stored at -20 to -80°C. Reconstituted protein solution can be stored at 4-8°C for 2-7 days. Aliquots of reconstituted samples are stable at < -20°C for 3 months.
<b>Shipping</b>	This product is provided as lyophilized powder which is shipped with ice packs.
<b>Formulation</b>	Lyophilized from sterile PBS, pH 7.4 Normally 5 % - 8 % trehalose, mannitol and 0.01 % Tween80 are added as protectants before lyophilization. Please refer to the specific buffer information in the printed manual.
<b>Reconstitution</b>	Please refer to the printed manual for detailed information.

## Data



> 90 % as determined by reducing SDS-PAGE.

## Background

SerpinB6, also known as Cytoplasmic antiproteinase, Peptidase inhibitor 6, Placental thrombin inhibitor, SERPINB6 and PI-6, is a cytoplasm protein which belongs to theserpin family and Ov-serpin subfamily. SerpinB6 / PI-6 is an inhibitor of cathepsin G, kallikrein-8 and thrombin. It may play an important role in the inner ear in the protection against leakage of lysosomal content during stress and loss of this protection results in cell death and sensorineural hearing loss. SerpinB6 / PI-6 is expressed in keratinocytes (at protein level). It is also found in placenta, cardiac muscle, lung, liver, kidney and pancreas. SerpinB6 / PI-6 is expressed in the inner ear hair cells. It expressed abundantly by normal mast cells in different tissues and by mast cells in mastocytoma lesions. SerpinB6 / PI-6 may be involved in the regulation of serine proteinases

## For Research Use Only

A Reliable Research Partner in Life Science and Medicine

Toll-free: 1-888-852-8623

Web: [www.elabscience.com](http://www.elabscience.com)

Tel: 1-832-243-6086

Email: [techsupport@elabscience.com](mailto:techsupport@elabscience.com)

Fax: 1-832-243-6017

# Recombinant Human SerpinB6/PI-6 Protein (His Tag)

Catalog Number:PKSH030778



present in the brain or extravasated from the blood. Defects in SerpinB6 are the cause of deafness autosomal recessive type 91 which is a form of non-syndromic deafness characterized by progressive and age-dependent sensorineural hearing loss. Vestibular function is normal.

---

## For Research Use Only

A Reliable Research Partner in Life Science and Medicine

Toll-free: 1-888-852-8623

Tel: 1-832-243-6086

Fax: 1-832-243-6017

Web: [www.elabscience.com](http://www.elabscience.com)

Email: [techsupport@elabscience.com](mailto:techsupport@elabscience.com)