

Recombinant Human SLAM Family Member 5/SLAMF5/CD84(C-6His-Avi) Biotinylated

Catalog Number: PKSH034005



Note: Centrifuge before opening to ensure complete recovery of vial contents.

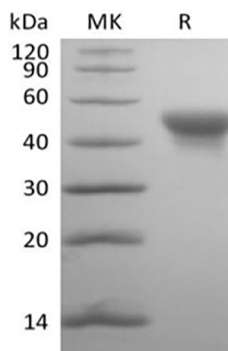
Description

Species	Human
Mol_Mass	24.9 kDa
Accession	Q9UIB8
Bio-activity	Not validated for activity

Properties

Purity	> 95 % as determined by reducing SDS-PAGE.
Endotoxin	< 1.0 EU per µg of the protein as determined by the LAL method.
Storage	Generally, lyophilized proteins are stable for up to 12 months when stored at -20 to -80 °C. Reconstituted protein solution can be stored at 4-8°C for 2-7 days. Aliquots of reconstituted samples are stable at < -20°C for 3 months.
Shipping	This product is provided as lyophilized powder which is shipped with ice packs.
Formulation	Lyophilized from a 0.2 µm filtered solution of PBS, pH 7.4. Normally 5% - 8% trehalose, mannitol and 0.01% Tween 80 are added as protectants before lyophilization. Please refer to the specific buffer information in the printed manual.
Reconstitution	Please refer to the printed manual for detailed information.

Data



> 95 % as determined by reducing SDS-PAGE.

Background

SLAM family member 5 (SLAMF5/CD84) is a type I transmembrane protein in the SLAM subgroup of the CD2 family. SLAM family proteins regulate multiple aspects of immune system function. Mature human CD84 consists of a 204 amino acid (aa) extracellular domain (ECD) with two Iglike domains, a 21 aa transmembrane segment, and a 99 aa cytoplasmic domain with two immunoreceptor tyrosinebased switch motifs (ITSMs). CD84 exhibits homophilic binding which is mediated by the N-terminal Ig-like domain. Ligation induces tyrosine phosphorylation in the cytoplasmic ITSMs which then recruit the signaling adaptor molecules SAP (SLAM-associated protein) and EAT-2 (EWS/Fli1-activated transcript 2). CD84 signaling inhibits Fc epsilon RI-induced mast cell activation but enhances platelet activation, LPS-induced macrophage activation, T cell proliferation and IFN-γ production, and the interactions between T cells and B cells that are required for germinal center formation.

For Research Use Only

A Reliable Research Partner in Life Science and Medicine
Tel: 400-999-2100

Email: techsupport@elabscience.cn

Web: www.elabscience.cn

Rev. V3.2