

## Recombinant Human Syntaxin-8/STX8 Protein

**Catalog Number:** PKSH033094

**Note:** Centrifuge before opening to ensure complete recovery of vial contents.

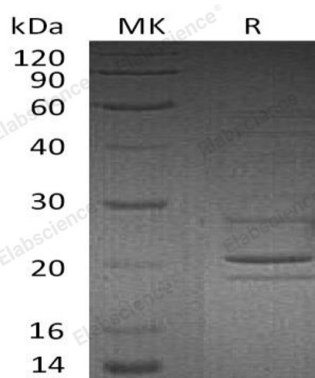
### Description

<b>Species</b>	Human
<b>Source</b>	E.coli-derived Human Syntaxin-8;STX8 protein Met 1-Gly215
<b>Calculated MW</b>	24.6 kDa
<b>Observed MW</b>	28 kDa
<b>Accession</b>	Q9UNK0
<b>Bio-activity</b>	Not validated for activity

### Properties

<b>Purity</b>	> 95 % as determined by reducing SDS-PAGE.
<b>Endotoxin</b>	< 1.0 EU per µg of the protein as determined by the LAL method.
<b>Storage</b>	Generally, lyophilized proteins are stable for up to 12 months when stored at -20 to -80 °C. Reconstituted protein solution can be stored at 4-8°C for 2-7 days. Aliquots of reconstituted samples are stable at < -20°C for 3 months.
<b>Shipping</b>	This product is provided as lyophilized powder which is shipped with ice packs.
<b>Formulation</b>	Lyophilized from a 0.2 µm filtered solution of 20mM PB,150mM NaCl,pH7.4. Normally 5% - 8% trehalose, mannitol and 0.01% Tween 80 are added as protectants before lyophilization.
	Please refer to the specific buffer information in the printed manual.
<b>Reconstitution</b>	Please refer to the printed manual for detailed information.

### Data



> 95 % as determined by reducing SDS-PAGE.

### Background

Syntaxin-8 is a single-pass type IV membrane protein which belongs to the syntaxin family. It contains one t-SNARE coil homology domain. STX8 is highly expressed in heart, also found in brain, kidney, liver, lung, placenta, skeletal muscle, spleen and pancreas. STX8 is involved in protein trafficking from early to late endosomes via vesicle fusion and exocytosis. It as a vesicle trafficking protein functions in the early secretory pathway, possibly mediating retrograde transport from cis-golgi membrane to the ER.

### For Research Use Only

Toll-free: 1-888-852-8623  
Web: [www.elabscience.com](http://www.elabscience.com)

Tel: 1-832-243-6086  
Email: [techsupport@elabscience.com](mailto:techsupport@elabscience.com)

Fax: 1-832-243-6017