

## Recombinant Human Interleukin-21/IL-21 Protein

Catalog Number: PKSH032631

**Note:** Centrifuge before opening to ensure complete recovery of vial contents.

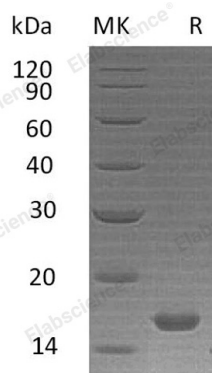
### Description

Species	Human
Source	E.coli-derived Human Interleukin-21;IL-21 protein Gln30-Ser162
Calculated MW	15.6 kDa
Observed MW	16 kDa
Accession	Q9HBE4
Bio-activity	Measured by its ability to enhance IFN-gamma secretion in NK-92 human natural killer lymphoma cells. The ED <sub>50</sub> for this effect is 2.47 ng/ml.

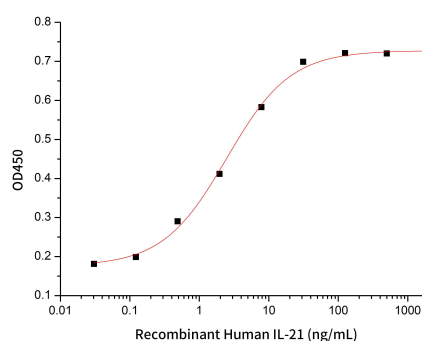
### Properties

Purity	> 95 % as determined by reducing SDS-PAGE.
Endotoxin	< 0.01 EU per µg of the protein as determined by the LAL method.
Storage	Generally, lyophilized proteins are stable for up to 12 months when stored at -20 to -80 °C. Reconstituted protein solution can be stored at 4-8°C for 2-7 days. Aliquots of reconstituted samples are stable at < -20°C for 3 months.
Shipping	This product is provided as lyophilized powder which is shipped with ice packs.
Formulation	Lyophilized from a 0.2 µm filtered solution of 20mM PB, 150mM NaCl, pH 7.4. Normally 5% - 8% trehalose, mannitol and 0.01% Tween 80 are added as protectants before lyophilization.
	Please refer to the specific buffer information in the printed manual.
Reconstitution	Please refer to the printed manual for detailed information.

### Data



> 95 % as determined by reducing SDS-PAGE.



Measured by its ability to enhance IFN-gamma secretion in NK-92 human natural killer lymphoma cells. The ED<sub>50</sub> for this effect is 2.47 ng/ml.

### Background

IL-21 induces the production of IgG1 and IgG3 in B-cells. IL-21 may promote the transition between innate and adaptive immunity. IL-21 may have a role in proliferation and maturation of natural killer cells in synergy with IL15. IL-21 stimulates interferon gamma production in T-cells and natural killer cells by synergy with IL15 and IL18. Dysregulation of IL-21 has a role in multiple immune-mediated diseases including lupus, psoriasis and chronic inflammatory diseases.

### For Research Use Only