

Vimentin Polyclonal Antibody

catalog number: E-AB-36172

Note: Centrifuge before opening to ensure complete recovery of vial contents.

Description

| | |
|---------------------|---|
| Reactivity | Human;Mouse;Rat |
| Immunogen | Synthesized peptide derived from Vimentin |
| Host | Rabbit |
| Isotype | IgG |
| Purification | Affinity purification |
| Buffer | Phosphate buffered solution, pH 7.4, containing 0.05% stabilizer, 0.5% protein protectant and 50% glycerol. |

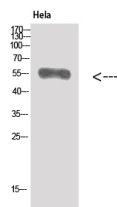
Applications

WB

Recommended Dilution

1:500-2000

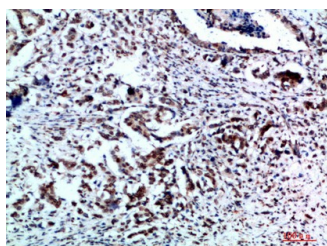
Data



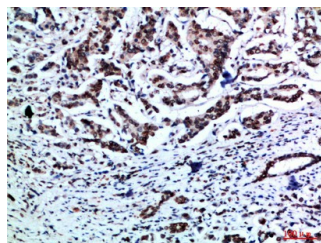
Western Blot analysis of HeLa cells using Vimentin Polyclonal Antibody at dilution of 1:500.

Observed-MW:55 kDa

Calculated-MW:54 kDa



Immunohistochemistry of paraffin-embedded Human breast cancer tissue using Vimentin Polyclonal Antibody at dilution of 1:200.



Immunohistochemistry of paraffin-embedded Human breast cancer tissue using Vimentin Polyclonal Antibody at dilution of 1:200.

Preparation & Storage

Storage

Store at -20°C Valid for 12 months. Avoid freeze / thaw cycles.

Shipping

The product is shipped with ice pack, upon receipt, store it immediately at the temperature recommended.

Background

Vimentins are class-III intermediate filaments found in various non-epithelial cells, especially mesenchymal cells. Vimentin is attached to the nucleus, endoplasmic reticulum, and mitochondria, either laterally or terminally.

For Research Use Only