

## Recombinant DLL3 Monoclonal Antibody

catalog number: **AN301506L**

**Note:** Centrifuge before opening to ensure complete recovery of vial contents.

### Description

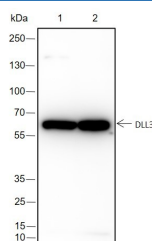
<b>Reactivity</b>	Human;
<b>Immunogen</b>	Recombinant human DLL3 fragment
<b>Host</b>	Rabbit
<b>Isotype</b>	IgG, $\kappa$
<b>Clone</b>	A205
<b>Purification</b>	Protein A purified
<b>Buffer</b>	PBS, 50% glycerol, 0.05% Proclin 300, 0.05% protein protectant.

### Applications

### Recommended Dilution

<b>WB</b>	1:500-1:1000
-----------	--------------

### Data



Western Blot with DLL3 Monoclonal Antibody at dilution of 1:1000. Lane 1: TT, Lane 2: A375

**Observed-MW:65 kDa**

**Calculated-MW:65 kDa**

### Preparation & Storage

<b>Storage</b>	Store at -20°C Valid for 12 months. Avoid freeze / thaw cycles.
<b>Shipping</b>	Ice bag

### Background

Delta-like protein 3 (DLL3), as a ligand of the Notch pathway, is specifically and highly expressed on the surface of SCLC (small cell lung cancer) cells. It plays an important role in tumor initiation, epithelial-mesenchymal transition, invasion and metastasis of SCLC. Inhibits primary neurogenesis. May be required to divert neurons along a specific differentiation pathway. Plays a role in the formation of somite boundaries during segmentation of the paraxial mesoderm.

### For Research Use Only