

## FITC Anti-Mouse CD32 Antibody[S17012B]

**Catalog Number:** AN00847C

**Note:** Centrifuge before opening to ensure complete recovery of vial contents.

### Description

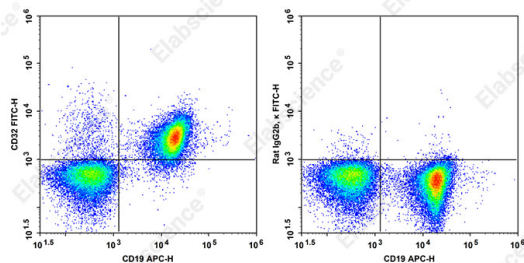
<b>Reactivity</b>	Mouse
<b>Host</b>	Rat
<b>Isotype</b>	Rat IgG2b, $\kappa$
<b>Clone No.</b>	S17012B
<b>Isotype Control</b>	FITC Rat IgG2b, $\kappa$ Isotype Control[LTF-2] [Product E-AB-F09842C]
<b>Conjugation</b>	FITC
<b>Conjugation Information</b>	FITC is designed to be excited by the Blue laser (488 nm) and detected using an optical filter centered near 530 nm (e.g., a 525/40 nm bandpass filter).
<b>Storage Buffer</b>	Phosphate buffered solution, pH 7.2, containing 0.09% stabilizer and 1% protein protectant.

### Applications

### Recommended usage

<b>FCM</b>	Each lot of this antibody is quality control tested by flow cytometric analysis. <b>The amount of the reagent is suggested to be used 5 <math>\mu</math>L of antibody per test (million cells in 100 <math>\mu</math>L staining volume or per 100 <math>\mu</math>L of whole blood).</b> Please check your vial before the experiment. Since applications vary, the appropriate dilutions must be determined for individual use.
------------	--

### Data



Staining of C57BL/6 murine splenocytes cells with FITC Anti-Mouse CD32 Antibody[S17012B] (left) or FITC Rat IgG2b,  $\kappa$  Isotype Control (right). Total viable cells were used for analysis.

### Preparation & Storage

<b>Storage</b>	Keep as concentrated solution. This product can be stored at 2-8°C for 12 months. Please protected from prolonged exposure to light and do not freeze.
<b>Shipping</b>	Ice bag

### Antigen Information

<b>Alternate Names</b>	Fcr-2;Fcr-3;Ly-17;LyM-1;Lym-1;fcRII;FcγRII;fcγr2b;AN00847
<b>Uniprot ID</b>	P08101
<b>Gene ID</b>	14130

### For Research Use Only

Toll-free: 1-888-852-8623  
Web: [www.elabscience.com](http://www.elabscience.com)

Tel: 1-832-243-6086  
Email: [techsupport@elabscience.com](mailto:techsupport@elabscience.com)

Fax: 1-832-243-6017

Rev. V1.2

**Background**

CD32 (FcγR2) is a 40 kD transmembrane glycoprotein, member of the immunoglobulin superfamily. The extracellular region of CD32 consists of two Ig C-type domains that binds the Fc region from monomeric IgG with low affinity, but binds immune complexes efficiently. CD32 can mediate phagocytosis of immune complexes and modulate cell activation. CD32 is expressed by Macrophages, neutrophils, mast cells and B cells.