

Elab Fluor® 647-conjugated beta Tubulin Monoclonal Antibody

catalog number: AN00293M

Note: Centrifuge before opening to ensure complete recovery of vial contents.

Description

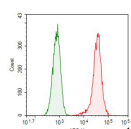
Reactivity	Human
Immunogen	Recombinant human TUBB protein by E. Coli
Host	Mouse
Isotype	IgG
Clone	2E8-2
Purification	Protein A/G Purification
Buffer	PBS with 0.05% Proclin300, 1% protective protein and 50% glycerol, pH7.4

Applications

Recommended Dilution

FCM	0.2 µg per 10 ⁶ cells in a 100 µL suspension
------------	---

Data



1X10⁶ HeLa cells were intracellularly stained with 0.2 µg

Elab Fluor® 647-conjugated beta Tubulin Monoclonal Antibody (red), or 0.2 µg Elab Fluor® 647-conjugated beta Tubulin Monoclonal Antibody Isotype Control (green).

Preparation & Storage

Storage	Store at -20°C Valid for 12 months. Avoid freeze / thaw cycles. Protected from prolonged exposure to light.
Shipping	The product is shipped with ice pack, upon receipt, store it immediately at the temperature recommended.

Background

In eukaryotes there are six members of the tubulin superfamily. α - and β -tubulins polymerize into microtubules, a major component of the eukaryotic cytoskeleton. Microtubules function in many essential cellular processes, including mitosis. Both α and β tubulins have a mass of around 50 kDa. Tubulin was long thought to be specific to eukaryotes. Beta-tubulin gene is commonly used as a loading control for western blot.

For Research Use Only