

Recombinant Human ANGPTL8/ β -trophin Protein (Fc Tag)

Catalog Number: PKSH032067

Note: Centrifuge before opening to ensure complete recovery of vial contents.

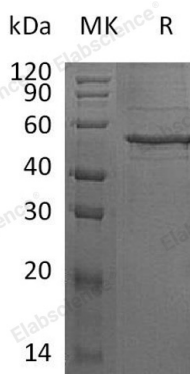
Description

| | |
|----------------------|--|
| Species | Human |
| Source | HEK293 Cells-derived Human ANGPTL8; β -trophin protein Ala22-Ala198, with an N-terminal Fc |
| Calculated MW | 46.0 kDa |
| Observed MW | 54 kDa |
| Accession | Q6UXH0 |
| Bio-activity | Not validated for activity |

Properties

| | |
|-----------------------|---|
| Purity | > 80 % as determined by reducing SDS-PAGE. |
| Endotoxin | < 1.0 EU per μ g of the protein as determined by the LAL method. |
| Storage | Generally, lyophilized proteins are stable for up to 12 months when stored at -20 to -80°C. Reconstituted protein solution can be stored at 4-8°C for 2-7 days. Aliquots of reconstituted samples are stable at < -20°C for 3 months. |
| Shipping | This product is provided as lyophilized powder which is shipped with ice packs. |
| Formulation | Lyophilized from a 0.2 μ m filtered solution of 20mM Histidine-HCl, 6% Trehalose, 4% Mannitol, 50mM NaCl, 0.05% Tween 80, pH6.0. Normally 5% - 8% trehalose, mannitol and 0.01% Tween 80 are added as protectants before lyophilization. Please refer to the specific buffer information in the printed manual. |
| Reconstitution | Please refer to the printed manual for detailed information. |

Data



> 80 % as determined by reducing SDS-PAGE.

Background

The protein specifically promotes pancreatic beta cell proliferation and beta cell mass expansion, thereby improving glucose tolerance. It promotes pancreatic beta cell proliferation without insulin resistance. Also it acts as a blood lipid regulator by regulating serum triglyceride levels and possibly by promoting ANGPTL3 cleavage. It interacts with ANGPTL3. It predominantly expressed in liver and also expressed in adipose tissues. The ability of the protein to induce pancreatic beta cell proliferation is promising in diabetes therapy. Betatrophin treatment could supply or replace insulin injections by increasing the number of insulin-producing cells in diabetes.

For Research Use Only

Toll-free: 1-888-852-8623
Web: www.elabscience.com

Tel: 1-832-243-6086
Email: techsupport@elabscience.com

Fax: 1-832-243-6017