

Recombinant Human KIR2DL3 Protein (His Tag)

Catalog Number: PKSH033319

Note: Centrifuge before opening to ensure complete recovery of vial contents.

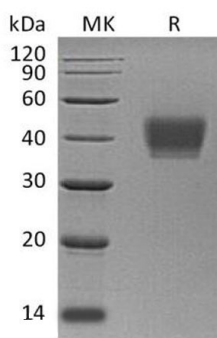
Description

Species	Human
Source	HEK293 Cells-derived Human KIR2DL3 protein His22-His245, with an C-terminal His
Mol_Mass	25.4 kDa
Accession	P43628
Bio-activity	Not validated for activity

Properties

Purity	> 95 % as determined by reducing SDS-PAGE.
Endotoxin	< 1.0 EU per µg of the protein as determined by the LAL method.
Storage	Generally, lyophilized proteins are stable for up to 12 months when stored at -20 to -80 °C. Reconstituted protein solution can be stored at 4-8°C for 2-7 days. Aliquots of reconstituted samples are stable at < -20°C for 3 months.
Shipping	This product is provided as lyophilized powder which is shipped with ice packs.
Formulation	Lyophilized from a 0.2 µm filtered solution of PBS, pH 7.4. Normally 5% - 8% trehalose, mannitol and 0.01% Tween 80 are added as protectants before lyophilization. Please refer to the specific buffer information in the printed manual.
Reconstitution	Please refer to the printed manual for detailed information.

Data



> 95 % as determined by reducing SDS-PAGE.

Background

Killer-Cell Immunoglobulin-Like Receptors (KIRs) are important cells of the immune system. KIRs are a family of Natural Killer (NK) Cells surface glycoproteins. KIRs control the killing function of these cells by interacting with MHC class I molecules. This interaction allows KIRs to identify virally infected cells or tumor cells by the distinctive low level of Class I MHC on their surface. The majority of KIRs are inhibitory, their recognition of MHC suppresses the cytotoxic activity of their NK cell. Only a limited number of KIRs have the capacity to activate cells. KIR2DL3 is an inhibitory Killer Cell Ig-like Receptor. KIR2DL3 recognizes class I MHC molecules (HLA-Cw1, -Cw3, -Cw7, and Cw8). KIR2DL3 inhibits the activity of NK cells thus preventing cell lysis.

For Research Use Only