

## Recombinant Human MMP-9 protein (His Tag)

**Catalog Number:** PDMH100118

**Note:** Centrifuge before opening to ensure complete recovery of vial contents.

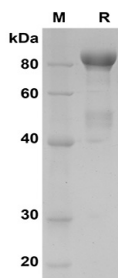
### Description

<b>Species</b>	Human
<b>Source</b>	Mammalian-derived Human MMP-9 protein Met1-Asp707, with an C-terminal His
<b>Calculated MW</b>	77.7 kDa
<b>Observed MW</b>	85 kDa
<b>Accession</b>	P14780
<b>Bio-activity</b>	Not validated for activity

### Properties

<b>Purity</b>	> 90% as determined by reducing SDS-PAGE.
<b>Endotoxin</b>	< 1.0 EU/mg of the protein as determined by the LAL method
<b>Storage</b>	Generally, lyophilized proteins are stable for up to 12 months when stored at -20 to -80 °C. Reconstituted protein solution can be stored at 4-8°C for 2-7 days. Aliquots of reconstituted samples are stable at < -20°C for 3 months.
<b>Shipping</b>	This product is provided as lyophilized powder which is shipped with ice packs.
<b>Formulation</b>	Lyophilized from a 0.2 µm filtered solution in PBS with 5% Trehalose and 5% Mannitol.
<b>Reconstitution</b>	It is recommended that sterile water be added to the vial to prepare a stock solution of 0.5 mg/mL. Concentration is measured by UV-Vis.

### Data



SDS-PAGE analysis of Human MMP-9 proteins, 2µg/lane of

Recombinant Human MMP-9 proteins was resolved with SDS-PAGE under reducing conditions, showing bands at 85 KD.

### Background

Matrix metalloproteinase 9 (MMP-9) is an enzyme encoded by the MMP9 gene. This protein, which is produced by normal alveolar macrophages and granulocytes, can be activated by 4-aminophenylmercuric acetate and phorbol ester and up-regulated by ARHGEF4, SPATA13 and APC via the JNK signaling pathway in colorectal tumor cells. MMP-9 is involved in the breakdown of extracellular matrix in normal physiological processes, such as embryonic development, reproduction, angiogenesis, bone development, wound healing, cell migration, learning and memory, as well as in pathological processes, such as arthritis, intracerebral hemorrhage, and metastasis.

### For Research Use Only