

## Recombinant ALDH1A1 Monoclonal Antibody

catalog number: **E-AB-81434**

**Note:** Centrifuge before opening to ensure complete recovery of vial contents.

### Description

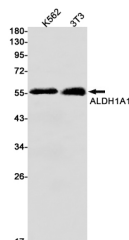
<b>Reactivity</b>	Human;Mouse
<b>Immunogen</b>	A synthetic peptide of human ALDH1A1
<b>Host</b>	Rabbit
<b>Isotype</b>	IgG
<b>Clone</b>	R09-3B9
<b>Purification</b>	Affinity Purified
<b>Buffer</b>	50mM Tris-Glycine(pH 7.4), 0.15M NaCl, 40% Glycerol, 0.05% stabilizer and 0.05% protective protein.

### Applications

### Recommended Dilution

<b>WB</b>	1:500-1:1000
<b>IHC</b>	1:20-1:100

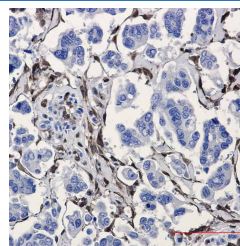
### Data



Western blot detection of ALDH1A1 in K562,3T3 cell lysates using ALDH1A1 Rabbit mAb(1:1000 diluted).Predicted band size:55kDa.Observed band size:55kDa.

**Observed-MW:55 kDa**

**Calculated-MW:55 kDa**



Immunohistochemistry of ALDH1A1 in paraffin-embedded Human Cholangiocarcinoma using ALDH1A1 Rabbit mAb at dilution 1:20

### Preparation & Storage

<b>Storage</b>	Store at -20°C Valid for 12 months. Avoid freeze / thaw cycles.
<b>Shipping</b>	The product is shipped with ice pack,upon receipt,store it immediately at the temperature recommended.

### Background

ALDH1A1(Aldehyde dehydrogenase family 1 member A1 ),also named as ALDC,ALDH1 and PUMBI,belongs to the aldehyde dehydrogenase family. The ALDH1A1 gene encodes a liver cytosolic isoform of acetaldehyde dehydrogenase,an enzyme involved in the major pathway of alcohol metabolism after alcohol dehydrogenase. ALDH1A1 plays a critical role in protection against oxidative stress-induced cytotoxicity in lens epithelial cells. And it is important for multiple biological activities including drug resistance,cell differentiation,and oxidative stress response. As a novel cancer stem cell marker,ALDH1A1 can be used for tumors whose corresponding normal tissues express ALDH1A1 in relatively restricted or limited levels such as breast,lung,ovarian or colon cancer.

### For Research Use Only