

NF2 / Merlin Polyclonal Antibody

catalog number: E-AB-40642

Note: Centrifuge before opening to ensure complete recovery of vial contents.

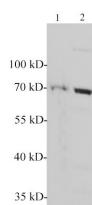
Description

Reactivity	Human;Mouse;Rat
Immunogen	Recombinant Human NF2 protein expressed by E.coli.
Host	Rabbit
Isotype	IgG
Purification	Antigen Affinity Purification
Buffer	PBS with 0.05% Proclin300, 1% protective protein and 50% glycerol, pH7.4

Applications Recommended Dilution

WB	1:500-1:1000
-----------	--------------

Data



Western blotting with anti-NF2 polyclonal Antibody at dilution of 1:1000. Lane 1: Mouse brain lysates, lane 2: Rat brain lysate.

Observed-MW:66-70 kDa
Calculated-MW:70 kDa



Western blot of PC-3 cell lysate with NF2 polyclonal antibody at 1:1000 dilution.

Observed-MW:66-70 kDa
Calculated-MW:70 kDa

Preparation & Storage

Storage	Store at -20°C Valid for 12 months. Avoid freeze / thaw cycles.
Shipping	The product is shipped with ice pack, upon receipt, store it immediately at the temperature recommended.

Background

Probable regulator of the Hippo/SWH (Sav/Wts/Hpo) signaling pathway, a signaling pathway that plays a pivotal role in tumor suppression by restricting proliferation and promoting apoptosis. Along with WWC1 can synergistically induce the phosphorylation of LATS1 and LATS2 and can probably function in the regulation of the Hippo/SWH (Sav/Wts/Hpo) signaling pathway. May act as a membrane stabilizing protein. May inhibit PI3 kinase by binding to AGAP2 and impairing its stimulating activity. Suppresses cell proliferation and tumorigenesis by inhibiting the CUL4A-RBX1-DDB1-VprBP/DCAF1 E3 ubiquitin-protein ligase complex.

For Research Use Only