

## Recombinant Human UBAP1 Protein (His Tag)

**Catalog Number:** PKSH033178

**Note:** Centrifuge before opening to ensure complete recovery of vial contents.

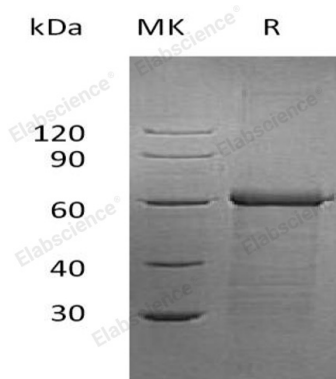
### Description

<b>Species</b>	Human
<b>Source</b>	E.coli-derived Human UBAP1 protein Met 1-Ser502, with an C-terminal His
<b>Calculated MW</b>	56.2 kDa
<b>Observed MW</b>	60 kDa
<b>Accession</b>	Q9NZ09
<b>Bio-activity</b>	Not validated for activity

### Properties

<b>Purity</b>	> 95 % as determined by reducing SDS-PAGE.
<b>Endotoxin</b>	< 1.0 EU per µg of the protein as determined by the LAL method.
<b>Storage</b>	Generally, lyophilized proteins are stable for up to 12 months when stored at -20 to -80°C. Reconstituted protein solution can be stored at 4-8°C for 2-7 days. Aliquots of reconstituted samples are stable at < -20°C for 3 months.
<b>Shipping</b>	This product is provided as lyophilized powder which is shipped with ice packs.
<b>Formulation</b>	Lyophilized from a 0.2 µm filtered solution of 20mM PB, 150mM NaCl, 1mM DTT, pH 7.4. Normally 5% - 8% trehalose, mannitol and 0.01% Tween 80 are added as protectants before lyophilization. Please refer to the specific buffer information in the printed manual.
<b>Reconstitution</b>	Please refer to the printed manual for detailed information.

### Data



> 95 % as determined by reducing SDS-PAGE.

### Background

Ubiquitin-Associated Protein 1 (UBAP1) belongs to the UBA domain family. Members of this family are related to ubiquitin and the ubiquitination pathway. Because of their cytogetic location, this UBA domain family member is being studied as a putative target for mutation in nasopharyngeal carcinomas. UBAP1 is highly expressed in the heart, brain, placenta, lung, skeletal muscle, liver, and pancreas. UBAP1 consists of two UBA domains and one UMA domain. The ubiquitin associated domain is thought to be a non-covalent ubiquitin binding domain, including a compact three helix bundle.

### For Research Use Only

Toll-free: 1-888-852-8623  
Web: [www.elabscience.com](http://www.elabscience.com)

Tel: 1-832-243-6086  
Email: [techsupport@elabscience.com](mailto:techsupport@elabscience.com)

Fax: 1-832-243-6017