

## Recombinant Human GOLPH2/GOLM1 Protein (aa 40-401, His Tag)

**Catalog Number:** PKSH030746

**Note:** Centrifuge before opening to ensure complete recovery of vial contents.

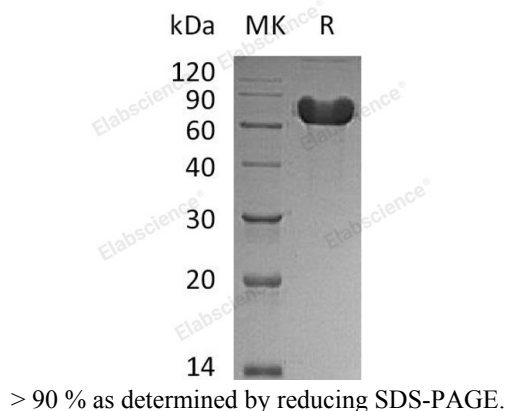
### Description

<b>Species</b>	Human
<b>Source</b>	HEK293 Cells-derived Human GOLPH2/GOLM1 protein Val 40-Leu 401, with an C-terminal His
<b>Calculated MW</b>	42.7 kDa
<b>Accession</b>	Q8NBJ4-1
<b>Bio-activity</b>	Not validated for activity

### Properties

<b>Purity</b>	> 90 % as determined by reducing SDS-PAGE.
<b>Endotoxin</b>	< 1.0 EU per µg of the protein as determined by the LAL method.
<b>Storage</b>	Generally, lyophilized proteins are stable for up to 12 months when stored at -20 to -80 °C. Reconstituted protein solution can be stored at 4-8°C for 2-7 days. Aliquots of reconstituted samples are stable at < -20°C for 3 months.
<b>Shipping</b>	This product is provided as lyophilized powder which is shipped with ice packs.
<b>Formulation</b>	Lyophilized from sterile PBS, pH 7.4 Normally 5% - 8% trehalose, mannitol and 0.01% Tween 80 are added as protectants before lyophilization. Please refer to the specific buffer information in the printed manual.
<b>Reconstitution</b>	Please refer to the printed manual for detailed information.

### Data



### Background

### For Research Use Only

Golgi membrane protein 1; also known as Golgi membrane protein GP73; Golgi phosphoprotein 2 and GOLM1; is a protein which belongs to the GOLM1 / CASC4 family. GOLM1 is widely expressed. It is highly expressed in colon; prostate; trachea and stomach. It is expressed at lower level in testis; muscle; lymphoid tissues; white blood cells and spleen. It is predominantly expressed by cells of the epithelial lineage. GOLM1 is expressed at low level in normal liver. Expression significantly increases in virus (HBV; HCV) infected liver. Expression of GOLM1 does not increase in liver disease due to non-viral causes (alcohol-induced liver disease; autoimmune hepatitis). Increased expression in hepatocytes appears to be a general feature of advanced liver disease. In liver tissue from patients with adult giant-cell hepatitis (GCH); GOLM1 is strongly expressed in hepatocyte-derived syncytial giant cells. GOLM1 is constitutively expressed by biliary epithelial cells but not by hepatocytes.