

Elab Fluor® 647-conjugated beta actin Monoclonal Antibody

catalog number: AN00295M

Note: Centrifuge before opening to ensure complete recovery of vial contents.

Description

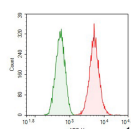
Reactivity	Rat
Immunogen	Recombinant human Beta actin protein by E. Coli
Host	Mouse
Isotype	IgG1
Clone	3A9
Purification	Protein A/G Purification
Buffer	PBS with 0.05% Proclin300, 1% protective protein and 50% glycerol, pH7.4

Applications

Recommended Dilution

FCM	0.2 µg per 10 ⁶ cells in a 100 µL suspension
------------	---

Data



1X10⁶ C6 cells were intracellularly stained with 0.2 µg Elab

Fluor® 647-conjugated beta actin Monoclonal Antibody
(red), or 0.2 µg Elab Fluor® 647-conjugated beta actin
Monoclonal Antibody Isotype Control (green).

Preparation & Storage

Storage	Store at -20°C Valid for 12 months. Avoid freeze / thaw cycles. Protected from prolonged exposure to light.
Shipping	The product is shipped with ice pack, upon receipt, store it immediately at the temperature recommended.

Background

Beta-actin (ACTB/ACTB) is one of six different actin isoforms in humans. Actins are highly conserved proteins that are involved in cell motility, structure and integrity. Beta actin is a major constituent of the contractile apparatus and one of the two nonmuscle cytoskeletal actins. Beta-actin gene is stably and constitutively expressed at high levels in most tissues and cells, and commonly used as a loading control for western blot and as a control for qPCR.

For Research Use Only