

RBX1 Polyclonal Antibody

catalog number: E-AB-18881

Note: Centrifuge before opening to ensure complete recovery of vial contents.

Description

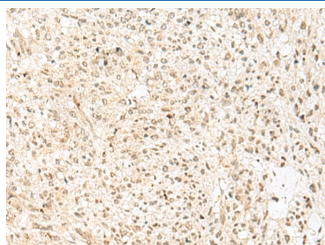
| | |
|--------------|--|
| Reactivity | Human;Mouse |
| Immunogen | Fusion protein of human RBX1 |
| Host | Rabbit |
| Isotype | IgG |
| Purification | Antigen affinity purification |
| Conjugation | Unconjugated |
| Buffer | Phosphate buffered solution, pH 7.4, containing 0.05% stabilizer and 50% glycerol. |

Applications

Recommended Dilution

| | |
|-----|------------|
| IHC | 1:40-1:200 |
|-----|------------|

Data



Immunohistochemistry of paraffin-embedded Human liver cancer tissue using RBX1 Polyclonal Antibody at dilution of 1:50(×200)

Preparation & Storage

| | |
|----------|--|
| Storage | Store at -20°C Valid for 12 months. Avoid freeze / thaw cycles. |
| Shipping | The product is shipped with ice pack, upon receipt, store it immediately at the temperature recommended. |

Background

This locus encodes a RING finger-like domain-containing protein. The encoded protein interacts with cullin proteins and likely plays a role in ubiquitination processes necessary for cell cycle progression. This protein may also affect protein turnover. Related pseudogenes exist on chromosomes 2 and 5.