

Recombinant Human RGMA Protein (E.coli, His Tag)

Catalog Number: PKSH033343



Note: Centrifuge before opening to ensure complete recovery of vial contents.

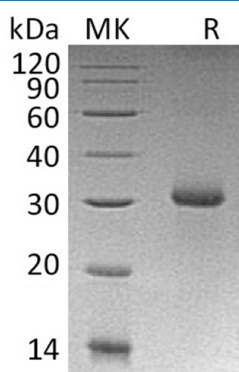
Description

Species	Human
Mol_Mass	29.8 kDa
Accession	AAI51133.1
Bio-activity	Not validated for activity

Properties

Purity	> 95 % as determined by reducing SDS-PAGE.
Endotoxin	< 1.0 EU per µg of the protein as determined by the LAL method.
Storage	Store at < -20°C, stable for 6 months. Please minimize freeze-thaw cycles.
Shipping	This product is provided as liquid. It is shipped at frozen temperature with blue ice/gel packs. Upon receipt, store it immediately at < - 20°C.
Formulation	Supplied as a 0.2 µm filtered solution of 20mM PB, 10% Trehalose, 50% Glycerol, 1mM DTT, 0.05% Tween 80, pH 7.8.
Reconstitution	Not Applicable

Data



> 95 % as determined by reducing SDS-PAGE.

Background

Repulsive guidance molecule A (RGMA) is a cell membrane protein and belongs to the repulsive guidance molecule (RGM) family. It interacts with NEO1; BMP2 and BMP4. RGMA is a glycosylphosphatidylinositol-anchored glycoprotein that functions as an axon guidance protein in the developing and adult central nervous system. It helps guide Retinal Ganglion Cell (RGC) axons to the tectum in the midbrain. RGMA has been implicated to play an important role in the developing brain and in the scar tissue that forms after a brain injury. This protein may also function as a tumor suppressor in some cancers.

For Research Use Only

A Reliable Research Partner in Life Science and Medicine
Tel:400-999-2100

Email:techsupport@elabscience.cn

Web:www.elabscience.cn

Rev. V3.2