

## Elab Bright™ Violet 510 Anti-Human CD3 Antibody[UCHT1]

Catalog Number: E-AB-F1230R1

**Note:** Centrifuge before opening to ensure complete recovery of vial contents.

### Description

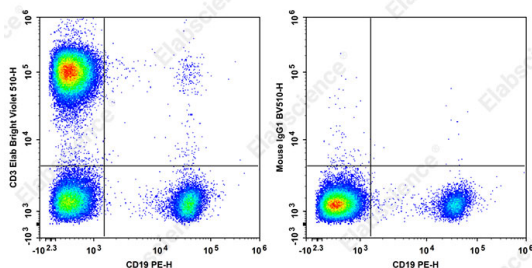
Reactivity	Human
Host	Mouse
Isotype	Mouse IgG1, κ
Clone No.	UCHT1
Isotype Control	Elab Bright™ Violet 510 Mouse IgG1, κ Isotype Control[X40] [Product AN00823R1]
Conjugation	Elab Bright™ Violet 510
Conjugation Information	Elab Bright Violet 510 is designed to be excited by the violet laser (405 nm) and detected using an optical filter centered near 510 nm (e.g., a 525/50 nm bandpass filter).
Storage Buffer	Phosphate buffered solution, pH 7.2, containing 0.09% stabilizer and 1% protein protectant.

### Applications

### Recommended usage

FCM	Each lot of this antibody is quality control tested by flow cytometric analysis. <b>The amount of the reagent is suggested to be used 5 μL of antibody per test (million cells in 100 μL staining volume or per 100 μL of whole blood).</b> Please check your vial before the experiment. Since applications vary, the appropriate dilutions must be determined for individual use.
-----	---

### Data



Staining of normal human peripheral blood cells with PE Anti-Human CD19 Antibody and Elab Bright Violet 510 Mouse Anti-Human CD3 Antibody[UCHT1] (left) or Elab Bright Violet 510 Mouse IgG1, κ Isotype Control (right). Cells in the lymphocytes gate were used for analysis.

### Preparation & Storage

Storage	Keep as concentrated solution. This product can be stored at 2-8°C for 12 months. Please protected from prolonged exposure to light and do not freeze.
Shipping	Ice bag

### Antigen Information

Alternate Names	CD3E;CD3e;T-cell surface antigen T3/Leu-4 epsilon chain;T-cell surface glycoprotein CD3 epsilon chain;T3E
-----------------	---

### For Research Use Only

Toll-free: 1-888-852-8623  
Web: [www.elabscience.com](http://www.elabscience.com)

Tel: 1-832-243-6086  
Email: [techsupport@elabscience.com](mailto:techsupport@elabscience.com)

Fax: 1-832-243-6017

Rev. V1.4

**Uniprot ID**

P07766

**Gene ID**

915

**Background**

CD3ε is a 20 kD chain of the CD3/T cell receptor (TCR) complex, which is composed of two CD3ε, one CD3γ, one CD3δ, one CD3ζ (CD247), and a T cell receptor (α/β or γ/δ) heterodimer. It is found on all mature T lymphocytes, NK T cells, and some thymocytes.

CD3, also known as T3, is a member of the immunoglobulin superfamily that plays a role in antigen recognition, signal transduction, and T cell activation.