

PLA2G6 Polyclonal Antibody

catalog number: E-AB-68019

Note: Centrifuge before opening to ensure complete recovery of vial contents.

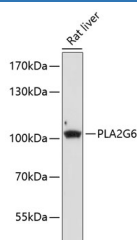
Description

Reactivity	Rat
Immunogen	A synthetic peptide of human PLA2G6 (NP_003551.2).
Host	Rabbit
Isotype	IgG
Purification	Affinity purification
Buffer	Phosphate buffered solution, pH 7.4, containing 0.05% stabilizer and 50% glycerol.

Applications Recommended Dilution

WB	1:500-1:2000
-----------	--------------

Data



Western blot analysis of extracts of Rat liver using PLA2G6 Polyclonal Antibody at dilution of 1:1000.

Observed-MW: 105 kDa

Calculated-MW: 46 kDa/53 kDa/84 kDa/89 kDa

Preparation & Storage

Storage	Store at -20°C Valid for 12 months. Avoid freeze / thaw cycles.
Shipping	The product is shipped with ice pack, upon receipt, store it immediately at the temperature recommended.

Background

The protein encoded by this gene is an A2 phospholipase, a class of enzyme that catalyzes the release of fatty acids from phospholipids. The encoded protein may play a role in phospholipid remodelling, arachidonic acid release, leukotriene and prostaglandin synthesis, fas-mediated apoptosis, and transmembrane ion flux in glucose-stimulated B-cells. Several transcript variants encoding multiple isoforms have been described, but the full-length nature of only three of them have been determined to date.

For Research Use Only