

## Purified Anti-Human CD2 Antibody[HIT11]

**Catalog Number:** GF1311A

**Note:** Centrifuge before opening to ensure complete recovery of vial contents.

### Description

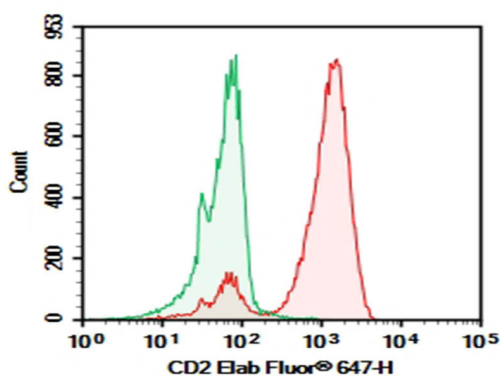
<b>Reactivity</b>	Human
<b>Immunogen</b>	Recombinant Human CD2 protein
<b>Host</b>	Mouse
<b>Isotype</b>	Mouse IgG1, $\kappa$
<b>Clone</b>	HIT11
<b>Purification</b>	>98%, Protein A/G purified
<b>Conjugation</b>	Unconjugated
<b>Buffer</b>	PBS, pH 7.2. Contains 0.05% proclin 300.

### Applications

### Recommended Dilution

<b>FCM</b>	2 $\mu$ g/mL (0.5 $\times$ 10 <sup>6</sup> -1 $\times$ 10 <sup>6</sup> cells)
------------	---

### Data



Human peripheral blood lymphocytes cell were stained with 0.2  $\mu$ g Purified Anti-Human CD2 Antibody[HIT11] (Right) and 0.2  $\mu$ g Mouse IgG1,  $\kappa$  Isotype Control (Left), followed by Elab Fluor® 647-conjugated Goat Anti-Mouse IgG Secondary Antibody.

### Preparation & Storage

<b>Storage</b>	Store at 4°C valid for 12 months or -20°C valid for long term storage, avoid freeze / thaw cycles.
<b>Shipping</b>	Ice bag

### Background

CD2 is a type I glycoprotein belonging to the Ig superfamily and is expressed on T cells, NK cells, B cells and some antigen presenting cells. Human CD2 binds Human CD58 on antigen-presenting cells to induce co-stimulating signals in T cells.