

METTL2A Polyclonal Antibody

catalog number: E-AB-66233

Note: Centrifuge before opening to ensure complete recovery of vial contents.

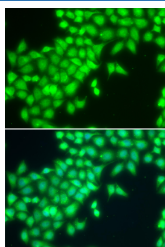
Description

Reactivity	Human
Immunogen	Recombinant fusion protein of human METTL2A (NP_859076.3).
Host	Rabbit
Isotype	IgG
Purification	Affinity purification
Buffer	Phosphate buffered solution, pH 7.4, containing 0.05% stabilizer and 50% glycerol.

Applications

Applications	Recommended Dilution
IF	1:50-1:100

Data



Immunofluorescence analysis of MCF-7 cells using
METTL2A Polyclonal Antibody

Preparation & Storage

Storage	Store at -20°C Valid for 12 months. Avoid freeze / thaw cycles.
Shipping	The product is shipped with ice pack, upon receipt, store it immediately at the temperature recommended.

Background

METTL2A (Methyltransferase Like 2A) is a Protein Coding gene. Gene Ontology (GO) annotations related to this gene include methyltransferase activity and tRNA (cytosine) methyltransferase activity. An important paralog of this gene is METTL2B.

For Research Use Only