

Recombinant Human Cyr61/CCN1 Protein (Fc Tag)

Catalog Number: PKSH032318

Note: Centrifuge before opening to ensure complete recovery of vial contents.

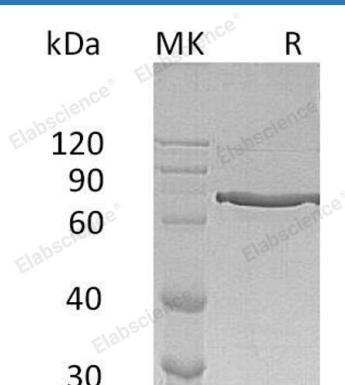
Description

Species	Human
Source	HEK293 Cells-derived Human Cyr61;CCN1 protein Thr 25-Asp381, with an C-terminal Fc
Calculated MW	66.5 kDa
Observed MW	71 kDa
Accession	O00622
Bio-activity	Not validated for activity

Properties

Purity	> 95 % as determined by reducing SDS-PAGE.
Endotoxin	< 1.0 EU per µg of the protein as determined by the LAL method.
Storage	Generally, lyophilized proteins are stable for up to 12 months when stored at -20 to -80°C. Reconstituted protein solution can be stored at 4-8°C for 2-7 days. Aliquots of reconstituted samples are stable at < -20°C for 3 months.
Shipping	This product is provided as lyophilized powder which is shipped with ice packs.
Formulation	Lyophilized from a 0.2 µm filtered solution of PBS, pH 7.4. Normally 5% - 8% trehalose, mannitol and 0.01% Tween 80 are added as protectants before lyophilization. Please refer to the specific buffer information in the printed manual.
Reconstitution	Please refer to the printed manual for detailed information.

Data



> 95 % as determined by reducing SDS-PAGE.

Background

Protein CYR61, also known as CCN family member 1, Cysteine-rich angiogenic inducer 61, Insulin-like growth factor-binding protein 10, GIG1, CYR61, CCN1 and IGFBP10, belongs to the CCN family. CYR61 is a secreted protein and contains one CTCK (C-terminal cystine knot-like) domain, one IGFBP N-terminal domain, one TSP type-1 domain and one VWFC domain. CYR61 promotes cell proliferation, chemotaxis, angiogenesis and cell adhesion. CYR61 plays important roles in inflammation and tissue repair. CYR61 is associated with diseases related to chronic inflammation, including rheumatoid arthritis, atherosclerosis, diabetes-related nephropathy and retinopathy, and many different forms of cancers.

For Research Use Only

Toll-free: 1-888-852-8623
Web: www.elabscience.com

Tel: 1-832-243-6086
Email: techsupport@elabscience.com

Fax: 1-832-243-6017