

## Recombinant Mouse GM-CSF/CSF2 Protein

Catalog Number: PKSM041031

**Note:** Centrifuge before opening to ensure complete recovery of vial contents.

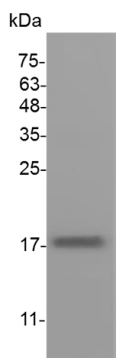
### Description

Species	Mouse
Source	E.coli-derived Mouse GM-CSF/CSF2 protein Ala18-Lys 141 , with an N-terminal His
Calculated MW	15.1 kDa
Observed MW	17 kDa
Accession	P01587
Bio-activity	Measure by its ability to induce proliferation in FDC-P1 cells. The ED <sub>50</sub> for this effect is <50 pg/mL. The specific activity of recombinant mouse GM-CSF is approximately >2 x 10 <sup>7</sup> IU/mg.

### Properties

Purity	> 98 % as determined by reducing SDS-PAGE.
Endotoxin	< 0.1 EU per µg of the protein as determined by the LAL method.
Storage	Generally, lyophilized proteins are stable for up to 12 months when stored at -20 to -80 °C. Reconstituted protein solution can be stored at 4-8°C for 2-7 days. Aliquots of reconstituted samples are stable at < -20°C for 3 months.
Shipping	This product is provided as lyophilized powder which is shipped with ice packs.
Formulation	Lyophilized from sterile PBS, pH 7.4. Normally 5% - 8% trehalose, mannitol and 0.01% Tween 80 are added as protectants before lyophilization. Please refer to the specific buffer information in the printed manual.
Reconstitution	Please refer to the printed manual for detailed information.

### Data



> 98 % as determined by reducing SDS-PAGE.

### Background

For Research Use Only

Tel:400-999-2100

Web: [www.elabscience.cn](http://www.elabscience.cn)

Email: [techsupport@elabscience.cn](mailto:techsupport@elabscience.cn)

Rev. V3.4

Granulocyte-Macrophage Colony Stimulating Factor (GM-CSF) was initially characterized as a growth factor that can support the in vitro colony formation of granulocyte-macrophage progenitors. It is produced by a number of different cell types (including activated T cells, B cells, macrophages, mast cells, endothelial cells and fibroblasts) in response to cytokine of immune and inflammatory stimuli. Besides granulocyte-macrophage progenitors, GM-CSF is also a growth factor for erythroid, megakaryocyte and eosinophil progenitors. On mature hematopoietic, monocytes/ macrophages and eosinophils. GM-CSF has a functional role on nonhematopoietic cells. It can induce human endothelial cells to migrate and proliferate. Additionally, GM-CSF can also stimulate the proliferation of a number of tumor cell lines, including osteogenic sarcoma, carcinoma and adenocarcinoma cell lines.