

## PE Anti-Mouse CD1d Antibody[19G11]

Catalog Number: E-AB-F1032D

**Note:** Centrifuge before opening to ensure complete recovery of vial contents.

### Description

<b>Reactivity</b>	Mouse
<b>Host</b>	Rat
<b>Isotype</b>	Rat IgG2b, $\kappa$
<b>Clone No.</b>	19G11
<b>Isotype Control</b>	PE Rat IgG2b, $\kappa$ Isotype Control[LTF-2] [Product E-AB-F09842D]
<b>Conjugation</b>	PE
<b>Conjugation Information</b>	PE is designed to be excited by the Blue (488 nm), Green (532 nm) and Yellow-Green (561 nm) lasers and detected using an optical filter centered near 575 nm (e.g., a 585/42 nm bandpass filter).
<b>Storage Buffer</b>	Phosphate buffered solution, pH 7.2, containing 0.09% stabilizer.

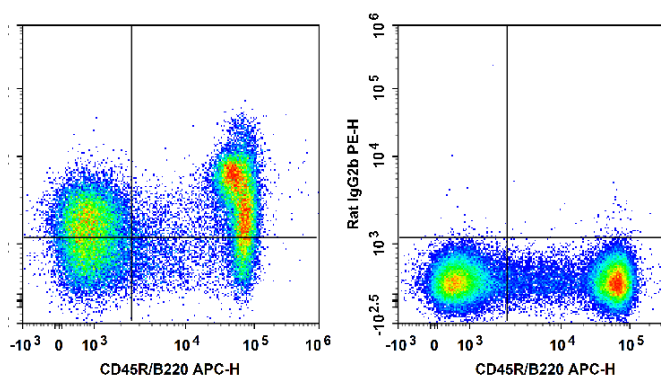
### Applications

FCM

### Recommended usage

Each lot of this antibody is quality control tested by flow cytometric analysis. **The amount of the reagent is suggested to be used 5  $\mu$ L of antibody per test (million cells in 100  $\mu$ L staining volume or per 100  $\mu$ L of whole blood).** Please check your vial before the experiment. Since applications vary, the appropriate dilutions must be determined for individual use.

### Data



Staining of C57BL/6 murine splenocytes with APC Anti-Mouse CD45R/B220 Antibody[RA3.3A 1/6.1] and PE Anti-Mouse CD1d Antibody[19G11] (left) or PE Rat IgG2b,  $\kappa$  Isotype Control (right). Total viable cells were used for analysis.

### Preparation & Storage

<b>Storage</b>	Keep as concentrated solution. This product can be stored at 2-8°C for 24 months. Please protected from prolonged exposure to light and do not freeze.
<b>Shipping</b>	Ice bag

### Antigen Information

<b>Alternate Names</b>	Antigen-presenting glycoprotein CD1d1;CD1d.1;Cd1.1;Cd1d1
<b>Uniprot ID</b>	P11609

### For Research Use Only

**Gene ID**

12479

**Background**

CD1d is a type I transmembrane protein and member of the MHC family, with a molecular weight ranging from 43-49 kD, depending on the glycosylation degree. CD1d is expressed by antigen presenting cells such as dendritic cells, monocytes, macrophages and B cells; also expressed by thymocytes and intestinal epithelial cells. CD1d present glycolipids to iNKT cells that recognize them by their Vα14i TCR.