

# MAP1LC3B Monoclonal Antibody

Catalog Number:E-AB-22132



**Note:** Centrifuge before opening to ensure complete recovery of vial contents.

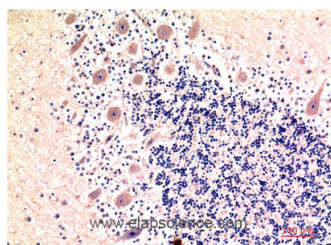
## Description

<b>Reactivity</b>	Human
<b>Immunogen</b>	Recombinant Protein of LC3B of MAP1LC3B
<b>Host</b>	Mouse
<b>Isotype</b>	IgG
<b>Clone</b>	Clone:6E4
<b>Purification</b>	Protein A purification
<b>Conjugation</b>	Unconjugated
<b>Formulation</b>	PBS with 0.02% sodium azide, 0.5% protective protein and 50% glycerol, pH7.4

## Applications Recommended Dilution

<b>IHC</b>	1:100-200
------------	-----------

## Data



Immunohistochemistry of paraffin-embedded Human brain tissue using MAP1LC3B Monoclonal Antibody at dilution of 1:200.

## Preparation & Storage

<b>Storage</b>	Store at -20°C. Avoid freeze / thaw cycles.
----------------	---

## Background

The product of this gene is a subunit of neuronal microtubule-associated MAP1A and MAP1B proteins, which are involved in microtubule assembly and important for neurogenesis. Studies on the rat homolog implicate a role for this gene in autophagy, a process that involves the bulk degradation of cytoplasmic component. MAP1LC3B (Microtubule Associated Protein 1 Light Chain 3 Beta) is a Protein Coding gene. Diseases associated with MAP1LC3B include Sporadic Pheochromocytoma and Lacrimal Gland Adenocarcinoma. Among its related pathways are Vesicle-mediated transport and Senescence and Autophagy in Cancer. GO annotations related to this gene include microtubule binding. An important paralog of this gene is MAP1LC3B2.

## For Research Use Only

A Reliable Research Partner in Life Science and Medicine

Toll-free: 1-888-852-8623

Web: [www.elabscience.com](http://www.elabscience.com)

Tel: 1-832-243-6086

Email: [techsupport@elabscience.com](mailto:techsupport@elabscience.com)

Fax: 1-832-243-6017