

Recombinant Cytokeratin 18 Monoclonal Antibody

catalog number: **AN300958L**

Note: Centrifuge before opening to ensure complete recovery of vial contents.

Description

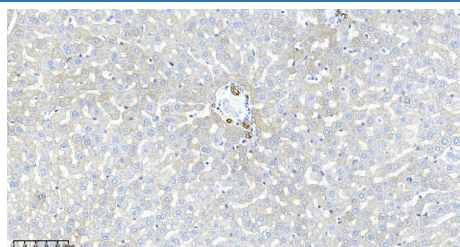
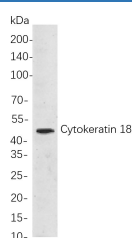
Reactivity	Human;Mouse;Rat
Immunogen	Recombinant Human Cytokeratin 18 protein
Host	Rabbit
Isotype	IgG, κ
Clone	B709
Purification	Protein A
Buffer	PBS, 50% glycerol, 0.05% Proclin 300, 0.05% protein protectant.

Applications

Recommended Dilution

IHC	1:2000-1:5000
WB	1:1000-1:5000
IF	1:200-1:1000
ELISA	1:5000-1:20000

Data



Western Blot with Recombinant Cytokeratin 18 Monoclonal Antibody at dilution of 1:1000. Lane A: HepG2 cells. Immunohistochemistry of paraffin-embedded rat liver using Recombinant Cytokeratin 18 Monoclonal Antibody at dilution of 1:200.

Observed-MW:48 kDa
Calculated-MW:48 kDa

Preparation & Storage

Storage	Store at -20°C Valid for 12 months. Avoid freeze / thaw cycles.
Shipping	Ice bag

Background

KRT18 encodes the type I intermediate filament chain keratin 18. Keratin 18, together with its filament partner keratin 8, are perhaps the most commonly found members of the intermediate filament gene family. They are expressed in single layer epithelial tissues of the body. Mutations in this gene have been linked to cryptogenic cirrhosis. Two transcript variants encoding the same protein have been found for this gene.

For Research Use Only

Toll-free: 1-888-852-8623
Web: www.elabscience.com

Tel: 1-832-243-6086
Email: techsupport@elabscience.com

Fax: 1-832-243-6017

Rev. V1.2