

# GDF-8 Polyclonal Antibody

catalog number: D-AB-10385L

**Note:** Centrifuge before opening to ensure complete recovery of vial contents.

## Description

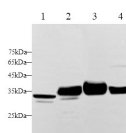
<b>Reactivity</b>	Human;Mouse;Rat
<b>Immunogen</b>	Recombinant Human GDF-8 Protein expressed by E.coli
<b>Host</b>	Rabbit
<b>Isotype</b>	IgG
<b>Purification</b>	Antigen Affinity Purification
<b>Conjugation</b>	Unconjugated
<b>buffer</b>	PBS with 0.05% proclin 300, 1% protective protein and 50% glycerol,pH7.4

## Applications

## Recommended Dilution

<b>WB</b>	1:500-1:1000
-----------	--------------

## Data



Western blot with GDF-8 Polyclonal antibody at dilution of 1:1000.lane 1:Hela whole cell lysate,lane 2:Mouse heart,lane 3:Rat heart,lane 4:Rat skeletal muscle

**Observed-MV:35 kDa-43 kDa**

**Calculated-MV:43 kDa**

## Preparation & Storage

<b>Storage</b>	Store at -20°C Valid for 12 months. Avoid freeze / thaw cycles.
<b>Shipping</b>	The product is shipped with ice pack,upon receipt,store it immediately at the temperature recommended.

## Background

Growth/differentiation factor 8(Mstn,GDF-8) is a member of the bone morphogenetic protein (BMP) family and the TGF-beta superfamily. This group of proteins is characterized by a polybasic proteolytic processing site which is cleaved to produce a mature protein containing seven conserved cysteine residues. It is expressed specifically in developing and adult skeletal muscle. It exists as a homodimer,and interacts with WFIKKN2,leading to inhibit its activity. This protein can act specifically as a negative regulator of skeletal muscle growth. It regulates cell growth and differentiation in both embryonic and adult tissues.

## For Research Use Only