

# MAD2L1BP Polyclonal Antibody

catalog number: E-AB-14202

**Note:** Centrifuge before opening to ensure complete recovery of vial contents.

## Description

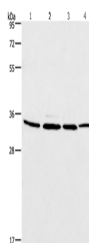
<b>Reactivity</b>	Human
<b>Immunogen</b>	Recombinant protein of human MAD2L1BP
<b>Host</b>	Rabbit
<b>Isotype</b>	IgG
<b>Purification</b>	Affinity purification
<b>Conjugation</b>	Unconjugated
<b>buffer</b>	Phosphate buffered solution, pH 7.4, containing 0.05% stabilizer and 50% glycerol.

## Applications

## Recommended Dilution

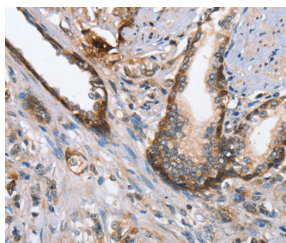
<b>WB</b>	1:500-1:2000
<b>IHC</b>	1:50-1:200

## Data

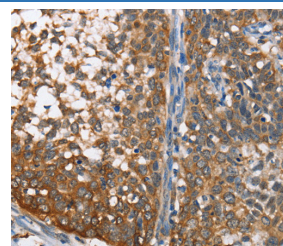


Western Blot analysis of A549, 231, PC3 and HeLa cell using MAD2L1BP Polyclonal Antibody at dilution of 1:675

**Calculated-MV:31 kDa**



Immunohistochemistry of paraffin-embedded Human prostate cancer using MAD2L1BP Polyclonal Antibody at dilution of 1:65



Immunohistochemistry of paraffin-embedded Human cervical cancer using MAD2L1BP Polyclonal Antibody at dilution of 1:65

## Preparation & Storage

<b>Storage</b>	Store at -20°C Valid for 12 months. Avoid freeze / thaw cycles.
<b>Shipping</b>	The product is shipped with ice pack, upon receipt, store it immediately at the temperature recommended.

## Background

The protein encoded by this gene was identified as a binding protein of the MAD2 mitotic arrest deficient-like 1 (MAD2/MAD2L1). MAD2 is a key component of the spindle checkpoint that delays the onset of anaphase until all the kinetochores are attached to the spindle. This protein may interact with the spindle checkpoint and coordinate cell cycle events in late mitosis. Alternatively spliced transcript variants encoding distinct isoforms have been observed.

## For Research Use Only