

# Recombinant Human PSA/KLK3 Protein (aa 25-261, His Tag)

Catalog Number: PKSH032949



**Note:** Centrifuge before opening to ensure complete recovery of vial contents.

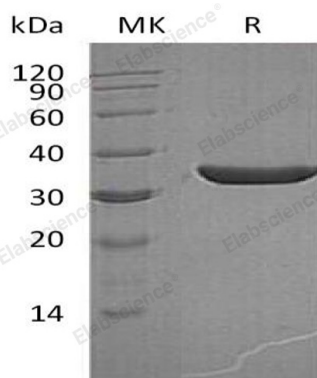
## Description

|                     |                            |
|---------------------|----------------------------|
| <b>Species</b>      | Human                      |
| <b>Mol_Mass</b>     | 27.1 kDa                   |
| <b>Accession</b>    | P07288                     |
| <b>Bio-activity</b> | Not validated for activity |

## Properties

|                       |  |
|-----------------------|--|
| <b>Purity</b>         | > 95 % as determined by reducing SDS-PAGE.   |
| <b>Endotoxin</b>      | < 1.0 EU per µg of the protein as determined by the LAL method.  |
| <b>Storage</b>        | Store at < -20°C, stable for 6 months. Please minimize freeze-thaw cycles.   |
| <b>Shipping</b>       | This product is provided as liquid. It is shipped at frozen temperature with blue ice/gel packs. Upon receipt, store it immediately at < - 20°C. |
| <b>Formulation</b>    | Supplied as a 0.2 µm filtered solution of 50mM Tris-HCl, 10mM CaCl <sub>2</sub> , 150mM NaCl, 0.05% Brij 35, pH 7.5.                             |
| <b>Reconstitution</b> | Not Applicable   |

## Data



> 95 % as determined by reducing SDS-PAGE.

## Background

KLK3; also known as APS; is short for Prostate-specific antigen. It is a 261 aa. protein which belongs to the peptidase S1 family and Kallikrein subfamily. This protein has 5 isoforms produced by alternative splicing. It is a secreted protein and can form a heterodimer with SERPINA5 which can inhibit its activity. KLK3 is also strongly inhibited by Zn<sup>2+</sup>; 100 times more abundant in semen than in serum. This inhibition is relieved by exposure to semenogelins; which are avid zinc binders. KLK3 can hydrolyze semenogelin-1 thus leading to the liquefaction of the seminal coagulum.

## For Research Use Only

A Reliable Research Partner in Life Science and Medicine  
Tel: 400-999-2100

Email: [techsupport@elabscience.cn](mailto:techsupport@elabscience.cn)

Web: [www.elabscience.cn](http://www.elabscience.cn)

Rev. V3.2