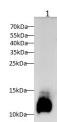


C3 Polyclonal Antibody

catalog number: D-AB-10387L

Note: Centrifuge before opening to ensure complete recovery of vial contents.

Description	
Reactivity	Mouse
Immunogen	Recombinant Mouse C3 Protein expressed by E.coli
Host	Rabbit
Isotype	IgG
Purification	Antigen Affinity Purification
Conjugation	Unconjugated
Buffer	PBS with 0.05% proclin 300, 1% protective protein and 50% glycerol,pH7.4
Applications	Recommended Dilution
WB	1:500-1:1000
Data	



Western blot with C3 Polyclonal antibody at dilution of
1:1000.lane 1: Mouse serum

Observed-MV:15 kDa

Calculated-MV:19 kDa

Preparation & Storage	
Storage	Store at -20°C Valid for 12 months. Avoid freeze / thaw cycles.
Shipping	The product is shipped with ice pack,upon receipt,store it immediately at the temperature recommended.

Background	
<p>C3 plays a central role in the activation of the complement system. Its processing by C3 convertase is the central reaction in both classical and alternative complement pathways. After activation C3b can bind covalently,via its reactive thioester,to cell surface carbohydrates or immune aggregates.</p> <p>Derived from proteolytic degradation of complement C3,C3a anaphylatoxin is a mediator of local inflammatory process. In chronic inflammation,acts as a chemoattractant for neutrophils.It induces the contraction of smooth muscle,increases vascular permeability and causes histamine release from mast cells and basophilic leukocytes. The short isoform has B-cell stimulatory activity.</p>	

For Research Use Only