

## Serpinb2 Polyclonal Antibody

**catalog number: E-AB-40446**

**Note:** Centrifuge before opening to ensure complete recovery of vial contents.

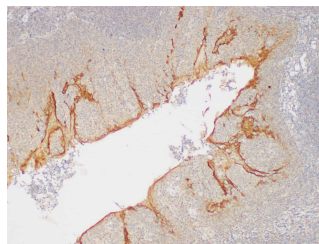
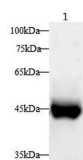
### Description

<b>Reactivity</b>	Human;Mouse;Rat
<b>Immunogen</b>	Recombinant Rat Plasminogen activator inhibitor 2 type A protein
<b>Host</b>	Rabbit
<b>Isotype</b>	IgG
<b>Purification</b>	Antigen Affinity Purification
<b>Buffer</b>	PBS with 0.05% Proclin300, 1% protective protein and 50% glycerol, pH7.4

### Applications

Applications	Recommended Dilution
<b>WB</b>	1:500-1000
<b>IHC</b>	1:50-1:200

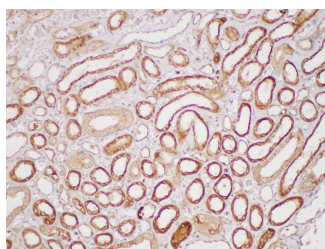
### Data



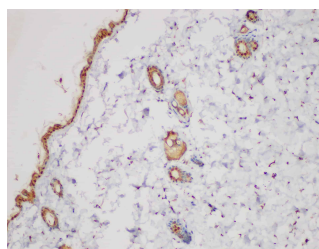
Western blot with Serpinb2 Polyclonal antibody at dilution of 1:1000. lane 1: Rat esophagus

**Observed-MW:47 kDa**

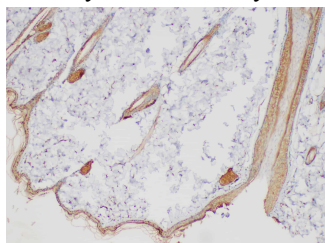
**Calculated-MW:47 kDa**



Immunohistochemistry of paraffin-embedded Human kidney using SERPINB2 Polyclonal Antibody at dilution of 1:200



Immunohistochemistry of paraffin-embedded Mouse skin using SERPINB2 Polyclonal Antibody at dilution of 1:200



Immunohistochemistry of paraffin-embedded Rat skin using SERPINB2 Polyclonal Antibody at dilution of 1:200

### Preparation & Storage

**Storage** Store at -20°C Valid for 12 months. Avoid freeze / thaw cycles.

### For Research Use Only

Toll-free: 1-888-852-8623  
Web: [www.elabscience.com](http://www.elabscience.com)

Tel: 1-832-243-6086  
Email: [techsupport@elabscience.com](mailto:techsupport@elabscience.com)

Fax: 1-832-243-6017

Rev. V2.0

**Shipping**

The product is shipped with ice pack, upon receipt, store it immediately at the temperature recommended.

**Background**

Plasminogen activator inhibitor-2 (placental PAI) is a coagulation factor that inactivates tPA and urokinase. It is present in most cells, especially monocytes/macrophages. PAI-2 exists in two forms, a 60-kDa extracellular glycosylated form and a 43-kDa intracellular form. It is present only at detectable quantities in blood during pregnancy, as it is produced by the placenta, and may explain partially the increased rate of thrombosis during pregnancy.

**For Research Use Only**

Toll-free: 1-888-852-8623

Web: [www.elabscience.com](http://www.elabscience.com)

Tel: 1-832-243-6086

Email: [techsupport@elabscience.com](mailto:techsupport@elabscience.com)

Fax: 1-832-243-6017

Rev. V2.0