

LGALS4 Polyclonal Antibody

catalog number: E-AB-17982

Note: Centrifuge before opening to ensure complete recovery of vial contents.

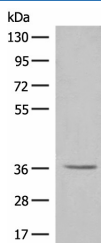
Description

Reactivity	Human
Immunogen	Synthetic peptide of human LGALS4
Host	Rabbit
Isotype	IgG
Purification	Antigen affinity purification
Buffer	Phosphate buffered solution, pH 7.4, containing 0.05% stabilizer and 50% glycerol.

Applications

Applications	Recommended Dilution
WB	1:500-1:2000
IHC	1:30-1:150

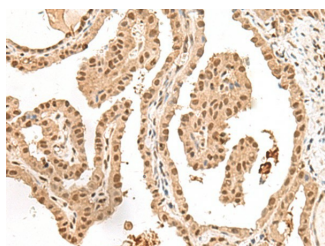
Data



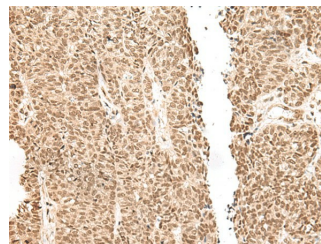
Western blot analysis of HT-29 cell lysate using LGALS4 Polyclonal Antibody at dilution of 1:300

Observed-MW: Refer to figures

Calculated-MW: 36 kDa



Immunohistochemistry of paraffin-embedded Human thyroid cancer tissue using LGALS4 Polyclonal Antibody at dilution of 1:30 (×200)



Immunohistochemistry of paraffin-embedded Human ovarian cancer tissue using LGALS4 Polyclonal Antibody at dilution of 1:30 (×200)

Preparation & Storage

Storage	Store at -20°C Valid for 12 months. Avoid freeze / thaw cycles.
Shipping	The product is shipped with ice pack, upon receipt, store it immediately at the temperature recommended.

Background

For Research Use Only

The galectins are a family of beta-galactoside-binding proteins implicated in modulating cell-cell and cell-matrix interactions. The expression of this gene is restricted to small intestine, colon, and rectum, and it is underexpressed in colorectal cancer. LGALS4 (Galectin 4) is a Protein Coding gene. Diseases associated with LGALS4 include Paraneoplastic Cerebellar Degeneration and Colorectal Cancer. Among its related pathways are Cell adhesion_Cell-matrix glycoconjugates. GO annotations related to this gene include carbohydrate binding. An important paralog of this gene is LGALS9.

For Research Use Only

Toll-free: 1-888-852-8623
Web: www.elabscience.com

Tel: 1-832-243-6086
Email: techsupport@elabscience.com

Fax: 1-832-243-6017

Rev. V1.7