

PALLD Polyclonal Antibody

Catalog Number: E-AB-90404



Note: Centrifuge before opening to ensure complete recovery of vial contents.

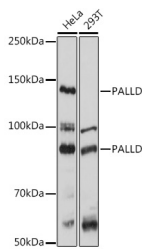
Description

Reactivity	Human, Mouse, Rat
Immunogen	Recombinant fusion protein of human PALLD
Host	Rabbit
Isotype	IgG
Purification	Affinity purification
Conjugation	Unconjugated
Formulation	PBS with 0.01% thiomersal, 50% glycerol, pH 7.3.

Applications Recommended Dilution

WB	1:500-1:2000
IP	50-1:200
IHC	1:50-1:200
IF	1:50-1:200

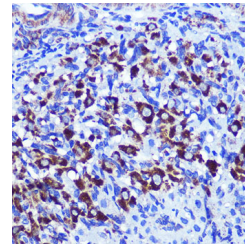
Data



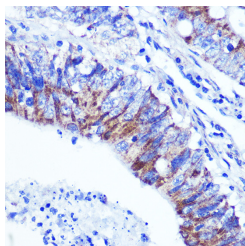
Western blot analysis of extracts of various cell lines using PALLD Polyclonal Antibody at 1:1000 dilution.

Observed Mw: 150kDa

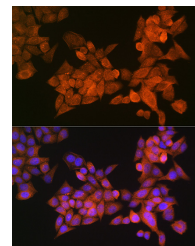
Calculated Mw: 42kDa/58kDa/73kDa/85-150kDa



Immunohistochemistry of paraffin-embedded rat ovary using PALLD Polyclonal Antibody at dilution of 1:100 (40x lens). Perform microwave antigen retrieval with 10 mM PBS buffer pH 7.2 before commencing with IHC staining protocol.



Immunohistochemistry of paraffin-embedded human colon carcinoma using PALLD Polyclonal Antibody at dilution of 1:100 (40x lens). Perform microwave antigen retrieval with 10 mM PBS buffer pH 7.2 before commencing with IHC staining protocol.



Immunofluorescence analysis of HeLa cells using PALLD Polyclonal Antibody at dilution of 1:100 (40x lens). Blue: DAPI for nuclear staining.

For Research Use Only

A Reliable Research Partner in Life Science and Medicine

Toll-free: 1-888-852-8623

Web: www.elabscience.com

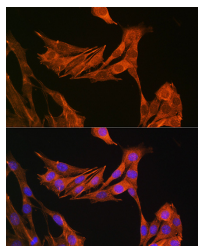
Tel: 1-832-243-6086

Email: techsupport@elabscience.com

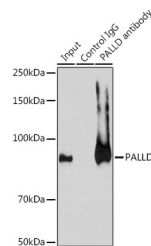
Fax: 1-832-243-6017

PALLD Polyclonal Antibody

Catalog Number: E-AB-90404



Immunofluorescence analysis of NIH-3T3 cells using PALLD Polyclonal Antibody at dilution of 1:100 (40x lens). Blue: DAPI for nuclear staining.



Immunoprecipitation analysis of 200ug extracts of A-549 cells using 3ug PALLD Polyclonal Antibody. Western blot was performed from the immunoprecipitate used.

Preparation & Storage

Storage Store at -20°C. Avoid freeze/thaw cycles.

Background

This gene encodes a cytoskeletal protein that is required for organizing the actin cytoskeleton. The protein is a component of actin-containing microfilaments, and it is involved in the control of cell shape, adhesion, and contraction. Polymorphisms in this gene are associated with a susceptibility to pancreatic cancer type 1, and also with a risk for myocardial infarction. Alternative splicing results in multiple transcript variants.

For Research Use Only

A Reliable Research Partner in Life Science and Medicine

Toll-free: 1-888-852-8623

Web: www.elabscience.com

Tel: 1-832-243-6086

Email: techsupport@elabscience.com

Fax: 1-832-243-6017