

Recombinant Human Butyrophilin-like Protein 9/BTNL9 (C-Fc)



Catalog Number:PKSH034025

Note: Centrifuge before opening to ensure complete recovery of vial contents.

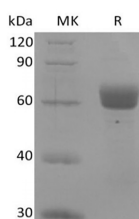
Description

| | |
|------------------------------------|-----------------------------------|
| Synonyms | Butyrophilin-like protein 9;BTNL9 |
| Species | Human |
| Expression Host | HEK293 Cells |
| Sequence | Ser35–Lys256 |
| Accession | Q6UXG8 |
| Calculated Molecular Weight | 52.0 kDa |
| Observed molecular weight | 55-70 kDa |
| Tag | C-Fc |

Properties

| | |
|-----------------------|---|
| Purity | > 95 % as determined by reducing SDS-PAGE. |
| Endotoxin | < 1.0 EU per µg of the protein as determined by the LAL method. |
| Storage | Generally, lyophilized proteins are stable for up to 12 months when stored at -20 to -80°C. Reconstituted protein solution can be stored at 4-8°C for 2-7 days. Aliquots of reconstituted samples are stable at < -20°C for 3 months. |
| Shipping | This product is provided as lyophilized powder which is shipped with ice packs. |
| Formulation | Lyophilized from a 0.2 µm filtered solution of PBS, pH 7.4. Normally 5 % - 8 % trehalose, mannitol and 0.01% Tween80 are added as protectants before lyophilization. Please refer to the specific buffer information in the printed manual. |
| Reconstitution | Please refer to the printed manual for detailed information. |

Data



> 95 % as determined by reducing SDS-PAGE.

Background

Butyrophilin-Like Protein 9 (BTNL9) is single-pass type I membrane protein member of the BTN/MOG family that belongs to the immunoglobulin superfamily. BTNL9 consists of two domains: one B30.2/SPRY domain and one Ig-like V-type (immunoglobulin-like) domain. Human BTNL9 mRNA has been identified in adipose, lung, thymus, spleen, colon, and cardiac tissues, but its highest levels of expression were found in B cells. BTNL9 expression has also been found to be down-regulated in colon cancer tumors.

For Research Use Only

A Reliable Research Partner in Life Science and Medicine

Toll-free: 1-888-852-8623

Web: www.elabscience.com

Tel: 1-832-243-6086

Email: techsupport@elabscience.com

Fax: 1-832-243-6017