

# Recombinant Human XPNPEP2 Protein (His Tag)

Catalog Number:PKSH030976



**Note:** Centrifuge before opening to ensure complete recovery of vial contents.

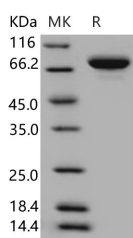
## Description

<b>Synonyms</b>	Xaa-Pro Aminopeptidase 2;Aminoacylproline Aminopeptidase;Membrane-Bound Aminopeptidase P;Membrane-Bound APP;Membrane-Bound AmP;mAmP;X-Pro Aminopeptidase 2;XPNPEP2
<b>Species</b>	Human
<b>Expression Host</b>	HEK293 Cells
<b>Sequence</b>	Met 1-Ala 650
<b>Accession</b>	O43895
<b>Calculated Molecular Weight</b>	72.0 kDa
<b>Tag</b>	C-His
<b>Bioactivity</b>	Measured by its ability to cleave the fluorogenic peptide substrate, H-Lys(2-Aminobenzoyl)Pro-Pro-pNitroanilide(K(Abz)PP-pNA). The specific activity is > 300 pmoles/min/μg.

## Properties

<b>Purity</b>	> 97 % as determined by reducing SDS-PAGE.
<b>Endotoxin</b>	< 1.0 EU per μg of the protein as determined by the LAL method.
<b>Storage</b>	Generally, lyophilized proteins are stable for up to 12 months when stored at -20 to -80°C. Reconstituted protein solution can be stored at 4-8°C for 2-7 days. Aliquots of reconstituted samples are stable at < -20°C for 3 months.
<b>Shipping</b>	This product is provided as lyophilized powder which is shipped with ice packs.
<b>Formulation</b>	Lyophilized from sterile PBS, pH 7.4 Normally 5 % - 8 % trehalose, mannitol and 0.01% Tween80 are added as protectants before lyophilization. Please refer to the specific buffer information in the printed manual.
<b>Reconstitution</b>	Please refer to the printed manual for detailed information.

## Data



> 97 % as determined by reducing SDS-PAGE.

## Background

Aminopeptidase P (APP) is a hydrolase specific for N-terminal imido bonds; which are common to several collagen degradation products; neuropeptides; vasoactive peptides; and cytokines. A membrane-bound and soluble form of this enzyme (XPNPEP2) have been identified as products of two separate genes. XPNPEP2; the X-linked gene that encodes membranous amino peptidase P (APP); has been reported to associate with APP activity. The membrane amino peptidase

## For Research Use Only

A Reliable Research Partner in Life Science and Medicine

Toll-free: 1-888-852-8623

Web: [www.elabscience.com](http://www.elabscience.com)

Tel: 1-832-243-6086

Email: [techsupport@elabscience.com](mailto:techsupport@elabscience.com)

Fax: 1-832-243-6017

# Recombinant Human XPNPEP2 Protein (His Tag)

Catalog Number:PKSH030976



P (XPNPEP2) is largely limited in distribution to endothelia and brush border epithelia. APP and XPNPEP2 contain homologous blocks of sequence common to members of the "pita bread-fold" protein family; of which Escherichia coli methionine aminopeptidase is the prototype. The C-2399A variant in XPNPEP2 is associated with reduced APP activity and a higher incidence of AE-ACEi. XPNPEP2 mRNA was detected in fibroblasts that carry the translocation; suggesting that this gene at least partially escapes X inactivation. XPNPEP2 is a candidate gene for premature ovarian failure (POF).

---

## For Research Use Only

A Reliable Research Partner in Life Science and Medicine

Toll-free: 1-888-852-8623

Web: [www.elabscience.com](http://www.elabscience.com)

Tel: 1-832-243-6086

Email: [techsupport@elabscience.com](mailto:techsupport@elabscience.com)

Fax: 1-832-243-6017