

## Elab Fluor® Violet 540 Anti-Mouse Ly6G Antibody[1A8]

**Catalog Number:** E-AB-F1108T3

**Note:** Centrifuge before opening to ensure complete recovery of vial contents.

### Description

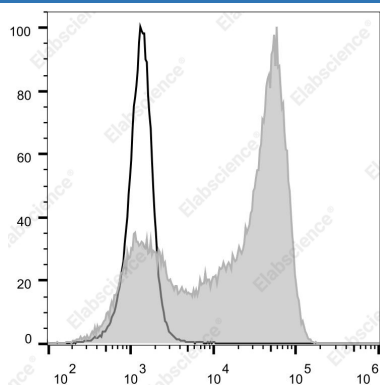
<b>Reactivity</b>	Mouse
<b>Host</b>	Rat
<b>Isotype</b>	Rat IgG2a, κ
<b>Clone No.</b>	1A8
<b>Isotype Control</b>	Elab Fluor® Violet 540 Rat IgG2a, κ Isotype Control[2A3] [Product E-AB-F09832T3]
<b>Conjugation</b>	Elab Fluor® Violet 540
<b>Conjugation Information</b>	Elab Fluor® Violet 540 is designed to be excited by the violet laser (405 nm) and detected using an optical filter centered near 548 nm (e.g., a 572/28 nm bandpass filter).
<b>Storage Buffer</b>	Phosphate buffered solution, pH 7.2, containing 0.09% stabilizer and 1% protein protectant.

### Applications

### Recommended usage

<b>FCM</b>	Each lot of this antibody is quality control tested by flow cytometric analysis. <b>The amount of the reagent is suggested to be used 5 μL of antibody per test (million cells in 100 μL staining volume or per 100 μL of whole blood).</b> Please check your vial before the experiment. Since applications vary, the appropriate dilutions must be determined for individual use.
------------	---

### Data



Staining of C57BL/6 murine bone marrow with Elab Fluor® Violet 540 Anti-Mouse Ly6G Antibody[1A8] (filled gray

histogram) or Elab Fluor® Violet 540 Rat IgG2a, κ Isotype Control(empty black histogram). Cells in the granulocytes gate were used for analysis.

### Preparation & Storage

<b>Storage</b>	Keep as concentrated solution. This product can be stored at 2-8°C for 12 months. Please protected from prolonged exposure to light and do not freeze.
<b>Shipping</b>	Ice bag

### Antigen Information

<b>Alternate Names</b>	Ly-6G;Ly-6G.1;Ly6g;Lymphocyte antigen 6G
<b>Uniprot ID</b>	P35461

### For Research Use Only

Toll-free: 1-888-852-8623  
Web: [www.elabscience.com](http://www.elabscience.com)

Tel: 1-832-243-6086  
Email: [techsupport@elabscience.com](mailto:techsupport@elabscience.com)

Fax: 1-832-243-6017

Rev. V1.7

**Gene ID**

546644

**Background**

Lymphocyte antigen 6 complex, locus G (Ly-6G), a 21-25 kD GPI-anchored protein, is expressed on the majority of myeloid cells in bone marrow and peripheral granulocytes