

## KIM-1 Polyclonal Antibody

**catalog number: D-AB-10398L**

**Note:** Centrifuge before opening to ensure complete recovery of vial contents.

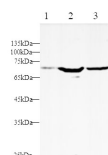
### Description

<b>Reactivity</b>	Human
<b>Immunogen</b>	Recombinant Rat KIM-1 protein expressed by Mammalian
<b>Host</b>	Rabbit
<b>Isotype</b>	IgG
<b>Purification</b>	Antigen Affinity Purification
<b>Buffer</b>	PBS with 0.05% Proclin300, 1% protective protein and 50% glycerol, pH7.4

### Applications Recommended Dilution

<b>WB</b>	1:500-1:1000
-----------	--------------

### Data



Western blot with KIM-1 Polyclonal Antibody at dilution of 1:1000. lane 1:293T whole cell lysate, lane 2:HepG2 whole cell lysate, lane 3:A549 whole cell lysate

**Observed-MW:50/70-140 kDa**

**Calculated-MW:34 kDa**

### Preparation & Storage

<b>Storage</b>	Store at -20°C Valid for 12 months. Avoid freeze / thaw cycles.
<b>Shipping</b>	The product is shipped with ice pack, upon receipt, store it immediately at the temperature recommended.

### Background

The protein encoded by this gene is a membrane receptor for both human hepatitis A virus (HHA V) and TIMD4. The encoded protein may be involved in the moderation of asthma and allergic diseases. The reference genome represents an allele that retains a MTTVP amino acid segment that confers protection against atopy in HHA V seropositive individuals. Three transcript variants encoding the same protein have been found for this gene.

### For Research Use Only