

Recombinant Mouse Cathepsin B/CTSB Protein (His Tag)

Catalog Number: PKSM040956

Note: Centrifuge before opening to ensure complete recovery of vial contents.

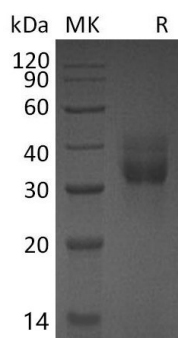
Description

Species	Mouse
Source	HEK293 Cells-derived Mouse Cathepsin B;CTSB protein His 18-Phe339, with an C-terminal His
Calculated MW	36.4 kDa
Observed MW	32-50 kDa
Accession	P10605
Bio-activity	Not validated for activity

Properties

Purity	> 95 % as determined by reducing SDS-PAGE.
Endotoxin	< 1.0 EU per µg of the protein as determined by the LAL method.
Storage	Generally, lyophilized proteins are stable for up to 12 months when stored at -20 to -80 °C. Reconstituted protein solution can be stored at 4-8°C for 2-7 days. Aliquots of reconstituted samples are stable at < -20°C for 3 months.
Shipping	This product is provided as lyophilized powder which is shipped with ice packs.
Formulation	Lyophilized from a 0.2 µm filtered solution of PBS, pH 7.4. Normally 5% - 8% trehalose, mannitol and 0.01% Tween 80 are added as protectants before lyophilization.
	Please refer to the specific buffer information in the printed manual.
Reconstitution	Please refer to the printed manual for detailed information.

Data



> 95 % as determined by reducing SDS-PAGE.

Background

Cathepsin B (CatB) is an enzymatic protein belonging to the peptidase (or protease) families. It is the first described member of the family of lysosomal cysteine proteases. It is known to process a number of proteins, including pro and active caspases, prorenin and secretory leucoprotease inhibitor (SLPI). It is believed to participate in intracellular degradation and turnover of proteins. Cathepsin B may play a role in activation and inactivation of caspases, activation of renin and inactivation of SLPI, the key steps in apoptosis, angiotensin production, and progression of emphysema, respectively. Cathepsin B may also have a role in invasion and metastasis.

For Research Use Only