

Elab Fluor® 647-conjugated Vinculin Monoclonal Antibody

catalog number: AN00297M



Note: Centrifuge before opening to ensure complete recovery of vial contents.

Description

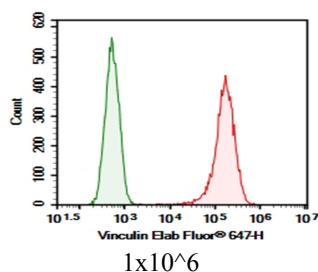
Reactivity	Human
Immunogen	Recombinant human Vinculin protein expressed by E.coli
Host	Mouse
Isotype	IgG1
Clone	4D4
Purification	Protein A/G Purification
Conjugation	Elab Fluor® 647(Ex/Em:650nm/665nm)
buffer	PBS with 0.05% proclin 300, 1% protective protein and 50% glycerol,pH7.4

Applications

Recommended Dilution

FCM	0.2 µg per 10 ⁶ cells in a 100 µL suspension
------------	---

Data



293T were intracellularly stained with 0.2 µg Elab Fluor® 647-conjugated Vinculin Monoclonal Antibody (red) and 0.2 µg Elab Fluor® 647-conjugated Vinculin Monoclonal Antibody (green).

Preparation & Storage

Storage	Store at -20°C Valid for 12 months. Avoid freeze / thaw cycles. Protected from prolonged exposure to light.
Shipping	The product is shipped with ice pack, upon receipt, store it immediately at the temperature recommended.

Background

Vinculin belongs to the vinculin/alpha-catenin family. It is an actin filament (F-actin)-binding protein which involved in cell-matrix adhesion and cell-cell adhesion. Vinculin regulates cell-surface E-cadherin expression and potentiates mechanosensing by the E-cadherin complex. It may also play important roles in cell morphology and locomotion. Vinculin is a 117-kDa, 1,066-amino-acid protein which is ubiquitously expressed. Its splice variant, metavinculin (124 kDa), is muscle-specific.

For Research Use Only