

LTF Monoclonal Antibody

catalog number: E-AB-22104

Note: Centrifuge before opening to ensure complete recovery of vial contents.

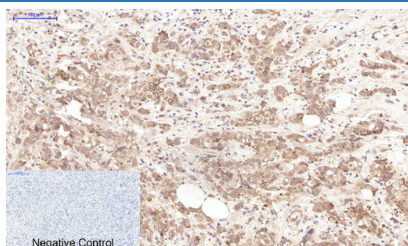
Description

Reactivity	Human
Immunogen	Synthetic Peptide
Host	Mouse
Isotype	IgG
Clone	1A6
Purification	Protein A purification
Buffer	Phosphate buffered solution, pH 7.4, containing 0.05% stabilizer, 0.5% protein protectant and 50% glycerol.

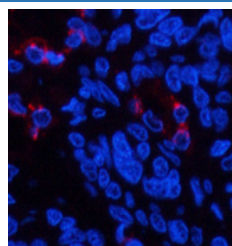
Applications

Applications	Recommended Dilution
IHC	1:50-300
IF	1:50-1:200

Data



Immunohistochemistry of paraffin-embedded Human breast cancer tissue using LTF Monoclonal Antibody at dilution of 1:200.



Immunofluorescence analysis of Human lung cancer tissue using LTF Monoclonal Antibody at dilution of 1:200.

Preparation & Storage

Storage	Store at -20°C Valid for 12 months. Avoid freeze / thaw cycles.
Shipping	The product is shipped with ice pack, upon receipt, store it immediately at the temperature recommended.

Background

This gene is a member of the transferrin family of genes and its protein product is found in the secondary granules of neutrophils. The protein is a major iron-binding protein in milk and body secretions with an antimicrobial activity, making it an important component of the non-specific immune system. The protein demonstrates a broad spectrum of properties, including regulation of iron homeostasis, host defense against a broad range of microbial infections, anti-inflammatory activity, regulation of cellular growth and differentiation and protection against cancer development and metastasis. Alternatively spliced transcript variants encoding different isoforms have been found for this gene.

For Research Use Only