

Galectin-1 Polyclonal Antibody(Capture/Detector)

catalog number: AN001160P

Note: Centrifuge before opening to ensure complete recovery of vial contents.

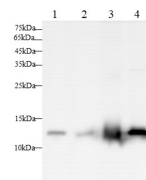
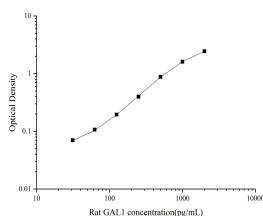
Description

Reactivity	Human;Mouse;Rat
Immunogen	Recombinant Rat Galectin-1 protein expressed by E.coli
Host	Rabbit
Isotype	Rabbit IgG
Purification	Antigen Affinity Purification
Conjugation	Unconjugated
buffer	Phosphate buffered solution, pH 7.2, containing 0.05% proclin 300.

Applications

Applications	Recommended Dilution
ELISA Capture	2-8 µg/mL
ELISA Detector	0.1-0.4 µg/mL
WB	1:1000-1:2000

Data



Sandwich ELISA-Recombinant Rat Galectin-1 protein standard curve. Background subtracted standard curve using Galectin-1 antibody(AN001160P)(Capture), Galectin-1 antibody(AN001160P)(Detector) in sandwich ELISA. The reference range value for Recombinant Rat Galectin-1 protein is 31.25-2000 pg/mL.

Western blot with Anti Galectin-1 Polyclonal antibody at dilution of 1:1000. Lane 1: A549 cell lysate, Lane 2: HL-60 cell lysate, Lane 3: C2C12 cell lysate, Lane 4: NIH/3T3 cell lysate.

Preparation & Storage

Storage	Store at 4°C valid for 12 months or -20°C valid for long term storage, avoid freeze / thaw cycles.
Shipping	The product is shipped with ice pack, upon receipt, store it immediately at the temperature recommended.

Background

The galectins constitute a large family of carbohydrate-binding proteins that function in many systems both intracellularly and following secretion. Galectins contain either one or two carbohydrate recognition domains (CRR) which mediate recognition of N-acetyl-lactosamine-containing glycoproteins. Some galectins exist in multiple isoforms due to alternative splicing. Individual galectins differ in their tissue distribution and in their carbohydrate-binding specificities.

For Research Use Only