

## CLPTM1 Polyclonal Antibody

catalog number: **E-AB-62680**

**Note:** Centrifuge before opening to ensure complete recovery of vial contents.

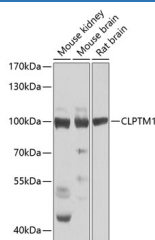
### Description

<b>Reactivity</b>	Human;Mouse;Rat
<b>Immunogen</b>	Recombinant fusion protein of human CLPTM1 (NP_001285.1).
<b>Host</b>	Rabbit
<b>Isotype</b>	IgG
<b>Purification</b>	Affinity purification
<b>Buffer</b>	Phosphate buffered solution, pH 7.4, containing 0.05% stabilizer and 50% glycerol.

### Applications

<b>WB</b>	1:500-1:2000
-----------	--------------

### Data



Western blot analysis of extracts of various cell lines using CLPTM1 Polyclonal Antibody at dilution of 1:1000.

**Observed-MW:100 kDa**

**Calculated-MW:65 kDa/75 kDa/76 kDa**

### Preparation & Storage

<b>Storage</b>	Store at -20°C Valid for 12 months. Avoid freeze / thaw cycles.
<b>Shipping</b>	The product is shipped with ice pack,upon receipt,store it immediately at the temperature recommended.

### Background

CLPTM1 (CLPTM1 Regulator Of GABA Type A Receptor Forward Trafficking) is a Protein Coding gene. Diseases associated with CLPTM1 include Cleft Lip and Cleft Lip/Palate-Ectodermal Dysplasia Syndrome. An important paralog of this gene is CLPTM1L.

### For Research Use Only