

Recombinant CD302/CLEC13A Monoclonal Antibody

catalog number: AN300166P

Note: *Centrifuge before opening to ensure complete recovery of vial contents.*

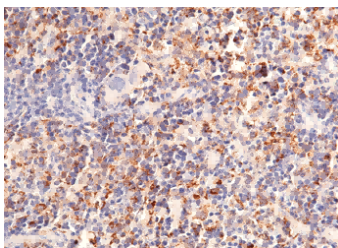
Description

Reactivity	Mouse
Immunogen	Recombinant Mouse CD302 / CLEC13A protein
Host	Rabbit
Isotype	IgG
Clone	5H5
Purification	Protein A
Buffer	0.2 µm filtered solution in PBS

Applications Recommended Dilution

IHC-P	1:100-1:500
--------------	-------------

Data



Immunohistochemistry of paraffin-embedded mouse spleen using CD302 / CLEC13A Monoclonal Antibody at dilution of 1:200.

Preparation & Storage

Storage	This antibody can be stored at 2°C-8°C for one month without detectable loss of activity. Antibody products are stable for twelve months from date of receipt when stored at -20°C to -80°C. Preservative-Free. Avoid repeated freeze-thaw cycles.
Shipping	Ice bag

Background

CD302/CLEC13A (C-type lectin domain family 13 member A), also known as C-type lectin receptor DCL-1, is a type I transmembrane C-type lectin DCL-1/CD302. DCL-1 protein was highly conserved among the human, mouse, and rat orthologs. DCL-1 ectodomain contains only one CRD, whereas other type I transmembrane C-type lectins contain more than one domain (e.g. selectins and MMR). DCL-1 CP contains several putative motifs, including a Tyr-based internalization, a cluster of acidic amino acids, and Ser and Tyr phosphorylation motifs, suggesting that DCL-1 CP mediates not only endocytosis and late endosome targeting but also signaling. DCL-1 may be another cell/matrix adhesion receptor integrated in cell adhesion complexes and that DCL-1 dysfunction may affect APC adhesion and migration, causing suppression of APC function.

For Research Use Only