

Recombinant Human Myoglobin/MB Protein (His Tag)

Catalog Number: PKSH033586

Note: Centrifuge before opening to ensure complete recovery of vial contents.

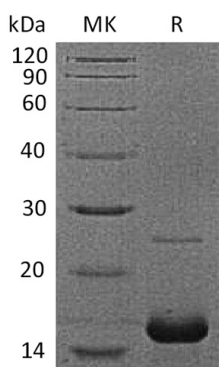
Description

Species	Human
Source	E.coli-derived Human Myoglobin/MB protein Met1-Gly154, with an C-terminal His
Calculated MW	18.0 kDa
Observed MW	18 kDa
Accession	P02144
Bio-activity	Not validated for activity

Properties

Purity	> 95 % as determined by reducing SDS-PAGE.
Concentration	Subject to label value.
Endotoxin	< 1.0 EU per µg of the protein as determined by the LAL method.
Storage	Store at < -20°C, stable for 6 months. Please minimize freeze-thaw cycles.
Shipping	This product is provided as liquid. It is shipped at frozen temperature with blue ice/gel packs. Upon receipt, store it immediately at < - 20°C.
Formulation	Supplied as a 0.2 µm filtered solution of PBS, 350mM NaCl, 5% Trehalose, 5% Mannitol, 0.02% Tween 80, 1mM EDTA, pH7.4.

Data



> 95 % as determined by reducing SDS-PAGE.

Background

Myoglobin is a 17KDa cytoplasmic oxygen-binding protein encoded by the MB gene and expressed in myocytes of the heart and skeletal muscle. Its name derives from its structural and functional similarity to hemoglobin, the oxygen binding protein found in red blood cells. Functions of myoglobin include oxygen storage and transport, as well as scavenging of NO and reactive oxygen species. Myoglobin also serves as a sensitive marker for muscle injury resulting from cardiac infarction. Myoglobin was the first protein to have its three-dimensional structure determined by X-ray crystallography.

For Research Use Only