

Elab Fluor[®] 488-conjugated GAPDH Monoclonal Antibody

catalog number: AN00296L



Note: Centrifuge before opening to ensure complete recovery of vial contents.

Description

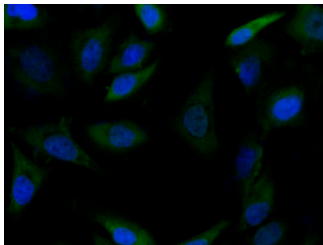
Reactivity	Human;Mouse
Immunogen	Recombinant human GAPDH protein expressed by E.coli
Host	Mouse
Isotype	IgG1
Clone	7B8
Purification	Protein A/G Purification
Conjugation	Elab Fluor [®] 488(Ex/Em:493nm/519nm)
buffer	PBS with 0.05% proclin 300, 1% protective protein and 50% glycerol,pH7.4

Applications

Recommended Dilution

IF	1:100-1:200
-----------	-------------

Data



Immunofluorescence analysis of HeLa cells using Elab Fluor[®] 488-conjugated GAPDH Monoclonal Antibody at dilution of 1:100

Preparation & Storage

Storage	Store at -20°C Valid for 12 months. Avoid freeze / thaw cycles. Protected from prolonged exposure to light.
Shipping	The product is shipped with ice pack,upon receipt,store it immediately at the temperature recommended.

Background

GAPDH is an enzyme of 37kDa that catalyzes the sixth step of glycolysis and thus serves to break down glucose for energy and carbon molecules. Because the GAPDH gene is often stably and constitutively expressed at high levels in most tissues and cells,it is commonly used as a loading control for western blot and as a control for qPCR.

For Research Use Only

A Reliable Research Partner in Life Science and Medicine
Tel: 400-999-2100

Email:techsupport@elabscience.cn

Web:www.elabscience.cn

Rev. V1.4